

REFH 6B, Bahnhofstrasse

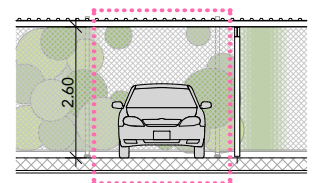
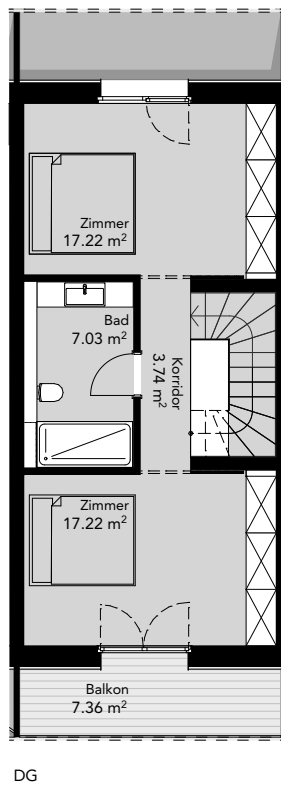
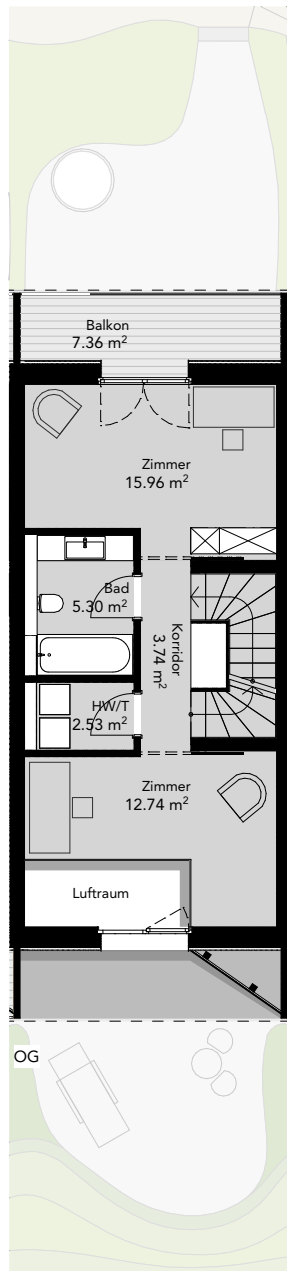
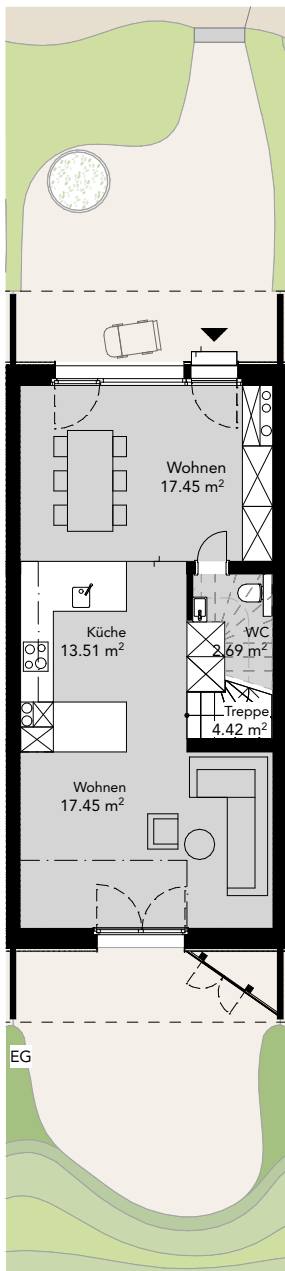
Hausnummer
6B

Reiheneinfamilienhaus
6 Zimmer (Galeriehaus)

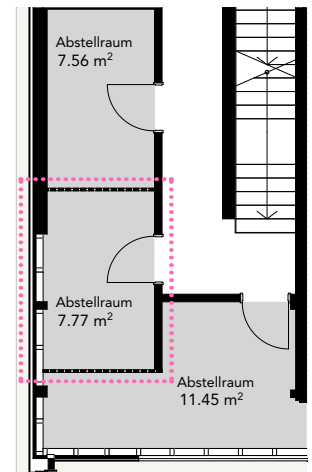
Wohnfläche
149.7m²

Balkon
14.7m²

Garten inkl. Vordächern / Abstellraum / Einbauschränke
73.0m² / 7.8m² / 4 Stück



Carport



OG, Abstellraum

