

IKKIL BAY

- ESTEPONA -

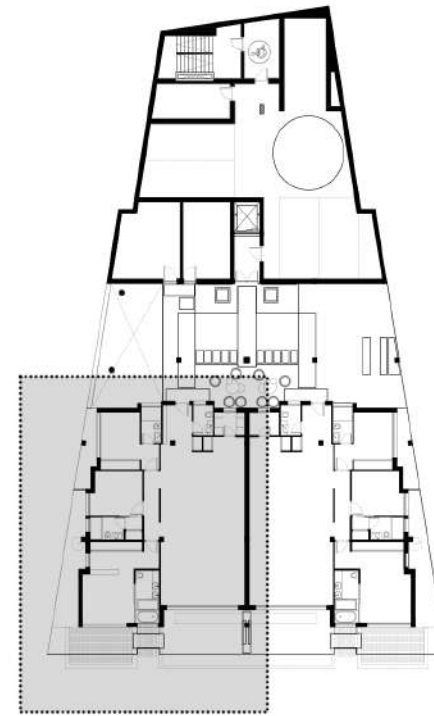
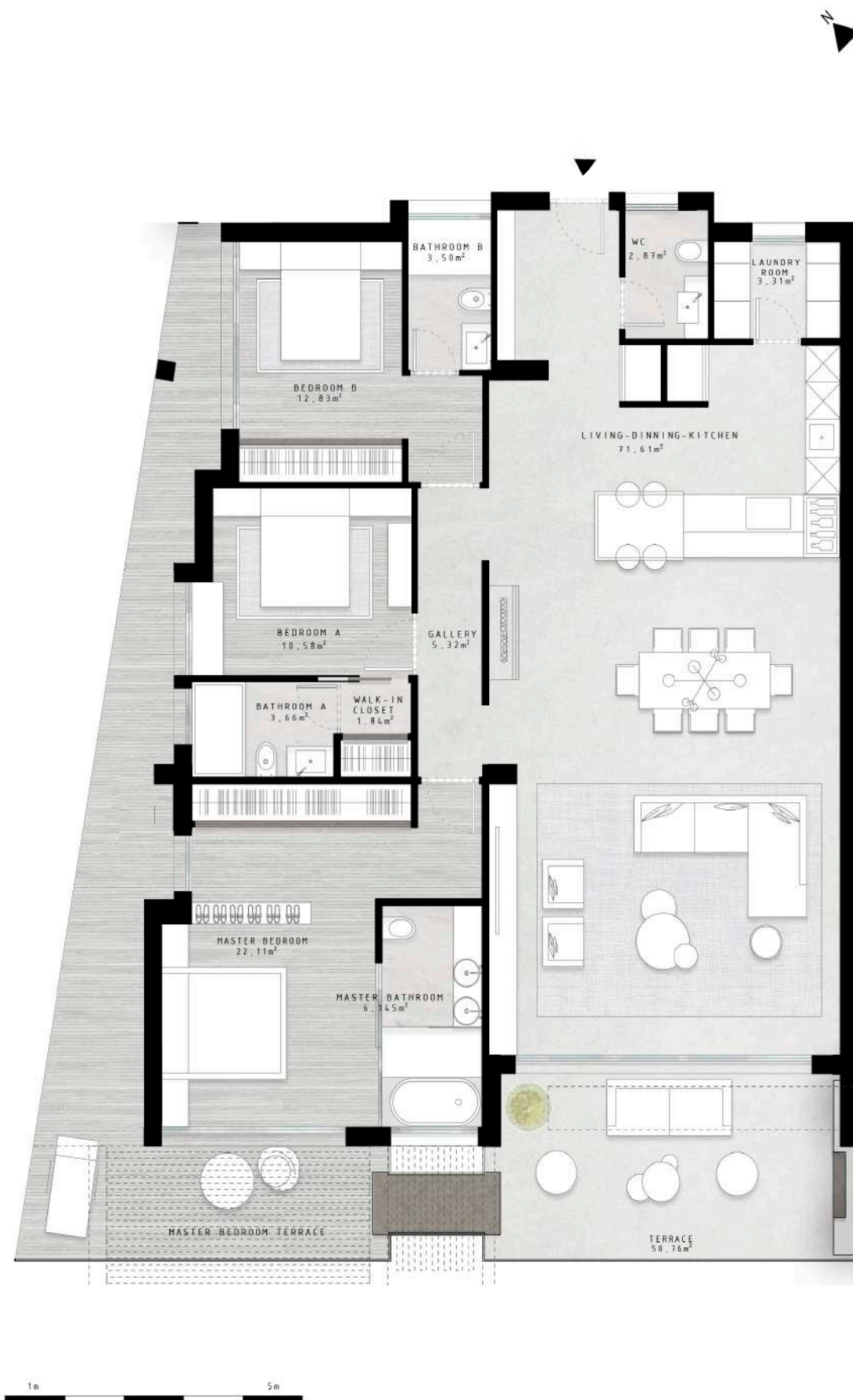


VILLA MARE

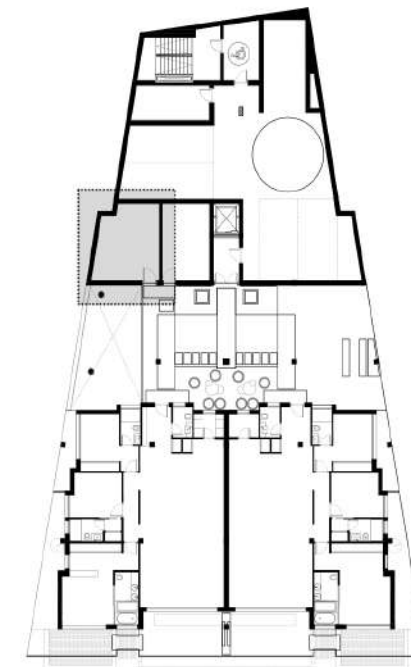
FLOOR -2 WEST



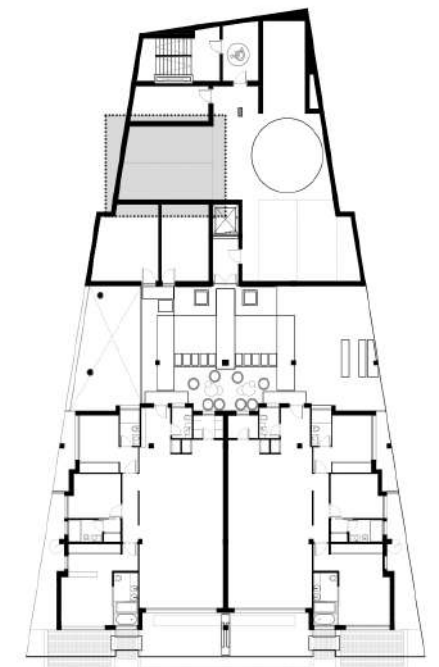
Drawings may differ from final results due to technical adjustments during Project Execution. Furnishing recreation made for decoration purposes.



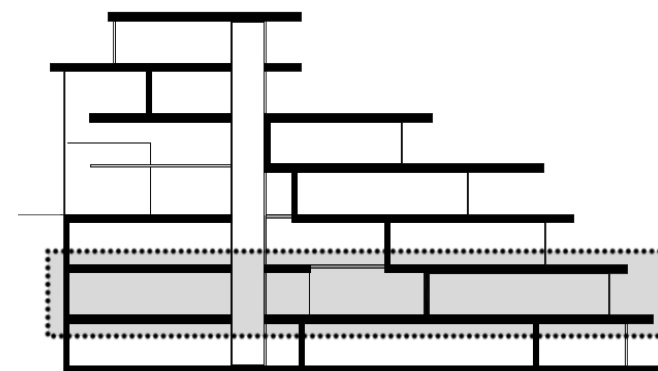
VILLA MARE
floor -2



STORAGE ROOM
floor -2



GARAGE
floor -2



VILLA MARE

Floor -2, west

Interior: 160,54 m²
Terrace: 50,76 m²

TOTAL BUILT SURFACE: 211,30 m²

* Usable Surface according to Real Decreto 218/2005: 169,15m²

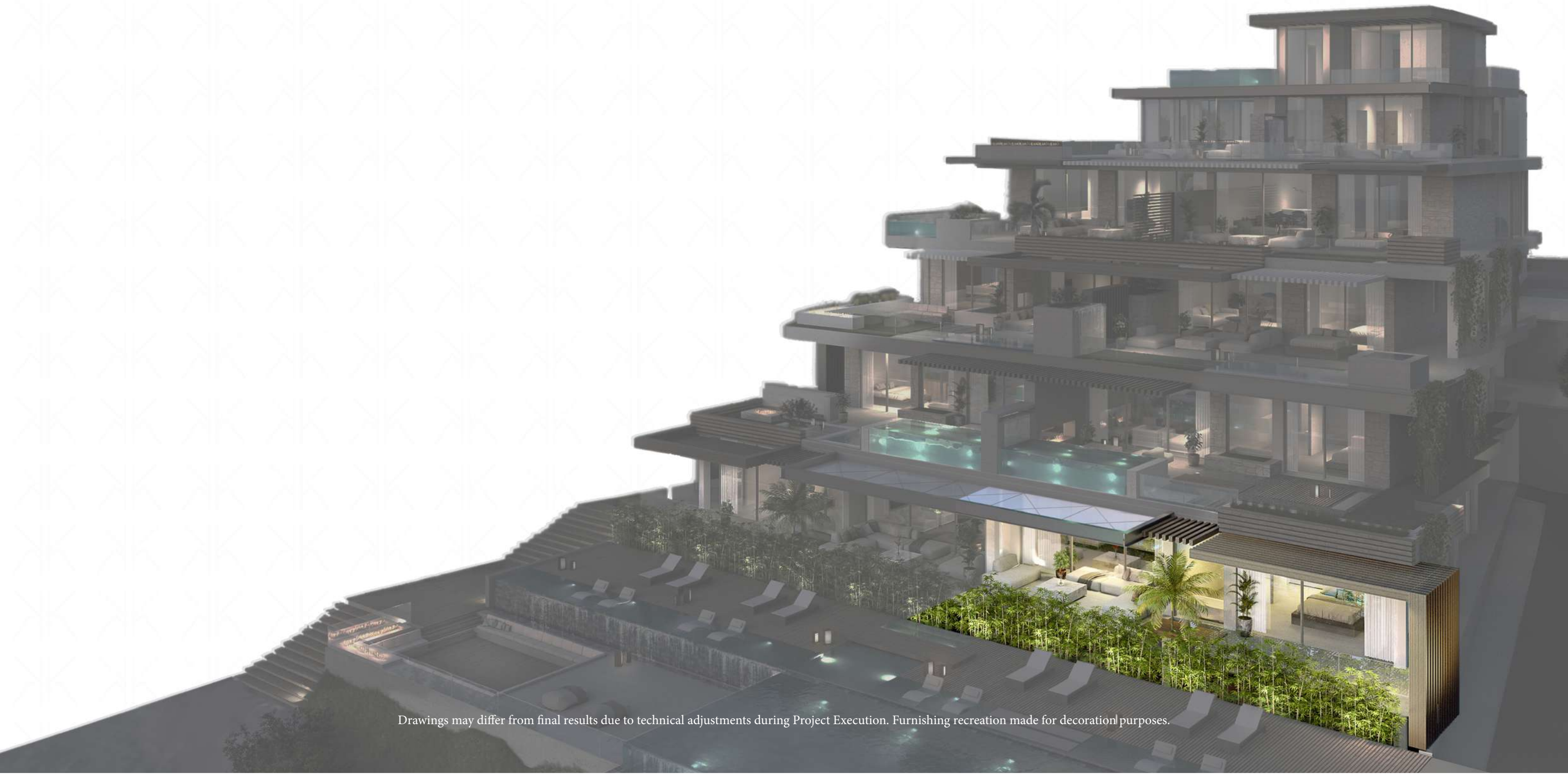
Storage room: 22,12m²
Garage 1: 16,32 m²
Garage 2: 15,29 m²

*This apartment comes with two garage parking spaces.

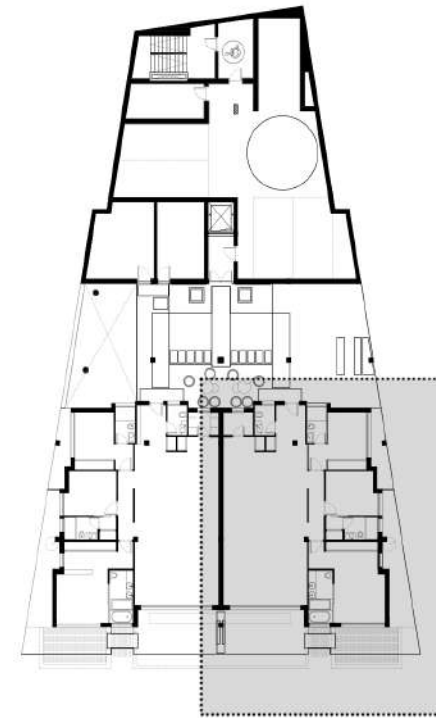
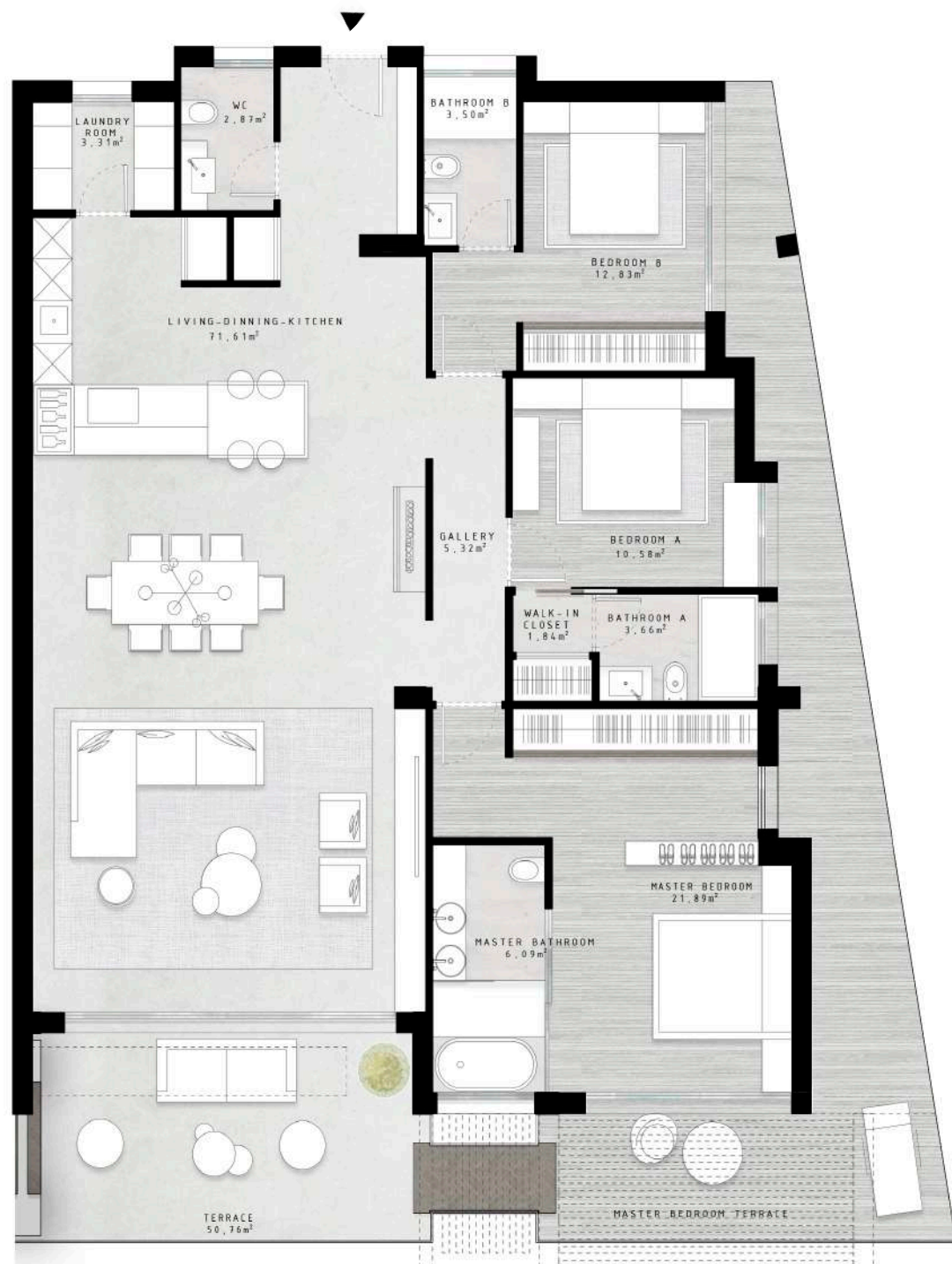
Mediterranean Sea

VILLA FONS

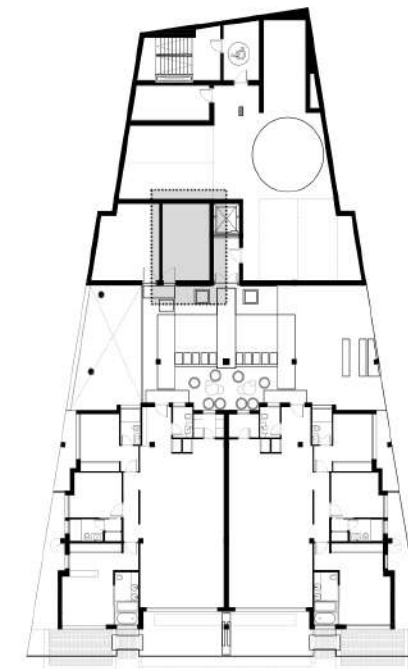
FLOOR -2 EAST



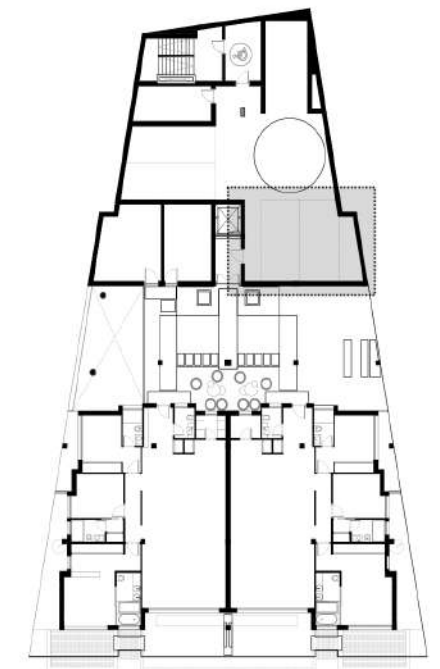
Drawings may differ from final results due to technical adjustments during Project Execution. Furnishing recreation made for decoration purposes.



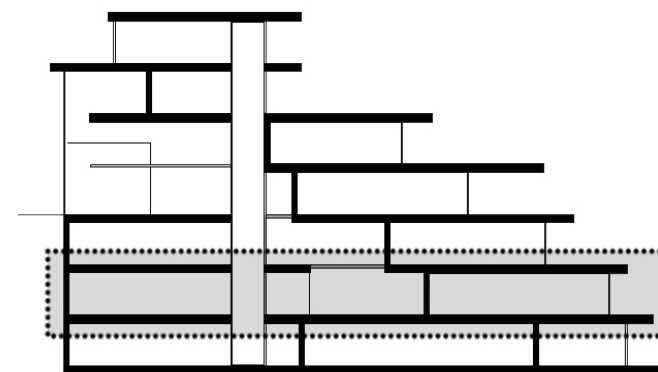
VILLA FONS
floor -2



STORAGE ROOM
floor -2



GARAGE
floor -2



VILLA FONS

Floor -2, east

Interior: 160,54 m²
Terrace: 50,76 m²

TOTAL BUILT SURFACE: 211,30 m²

* Usable Surface according to Real Decreto 218/2005: 168,89m²

Storage room: 17,36m²
Garage 1: 15,41 m²
Garage 2: 20,99 m²

*This apartment comes with two garage parking spaces.

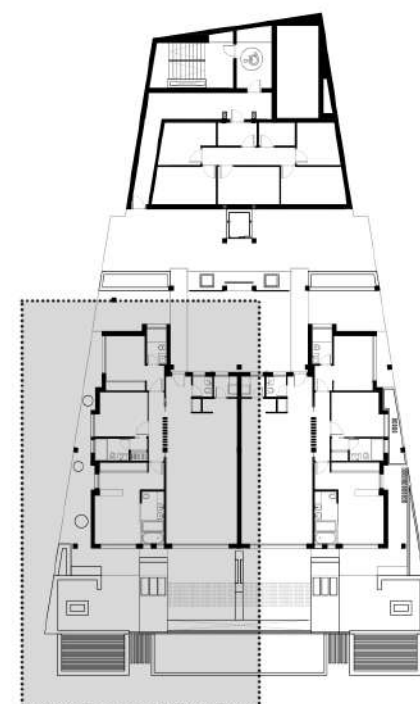
Mediterranean Sea

VILLA NATURA

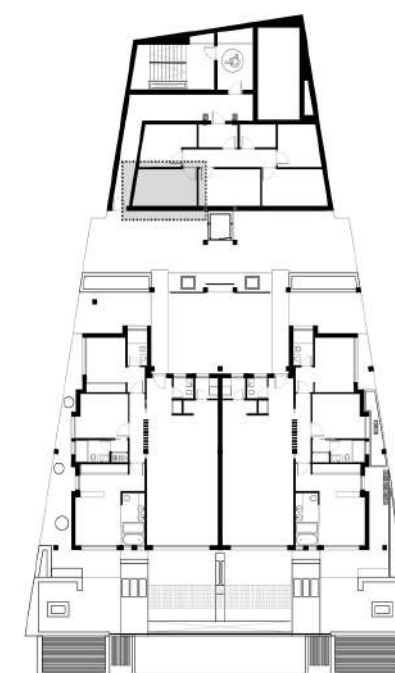
FLOOR -1 WEST



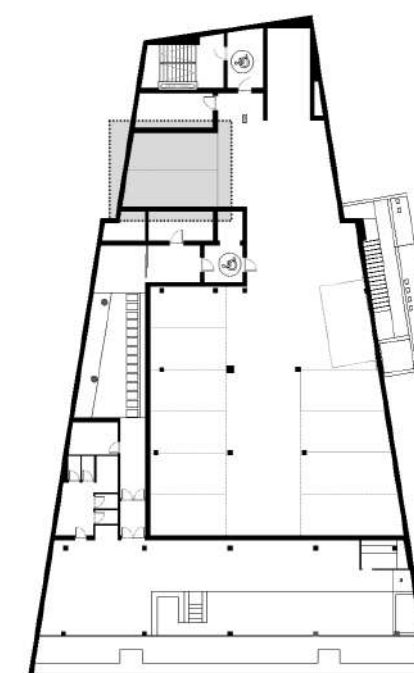
Drawings may differ from final results due to technical adjustments during Project Execution. Furnishing recreation made for decoration purposes.



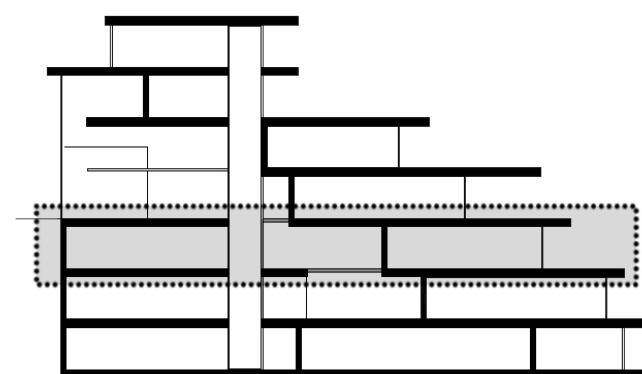
VILLA NATURA
floor -1



STORAGE ROOM
floor -1



GARAGE
floor -3



VILLA NATURA

Floor -1, west

Interior: 137,15 m²
Terrace: 94,95 m²

TOTAL BUILT SURFACE: 232,10 m²

* Usable Surface according to Real Decreto 218/2005: 166,51 m²

Storage room: 11,13m²
Garage 1: 16,32 m²
Garage 2: 15,29 m²

*This apartment comes with two garage parking spaces.

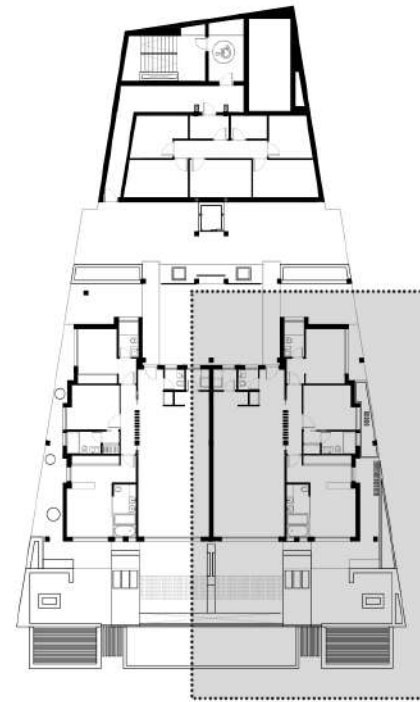
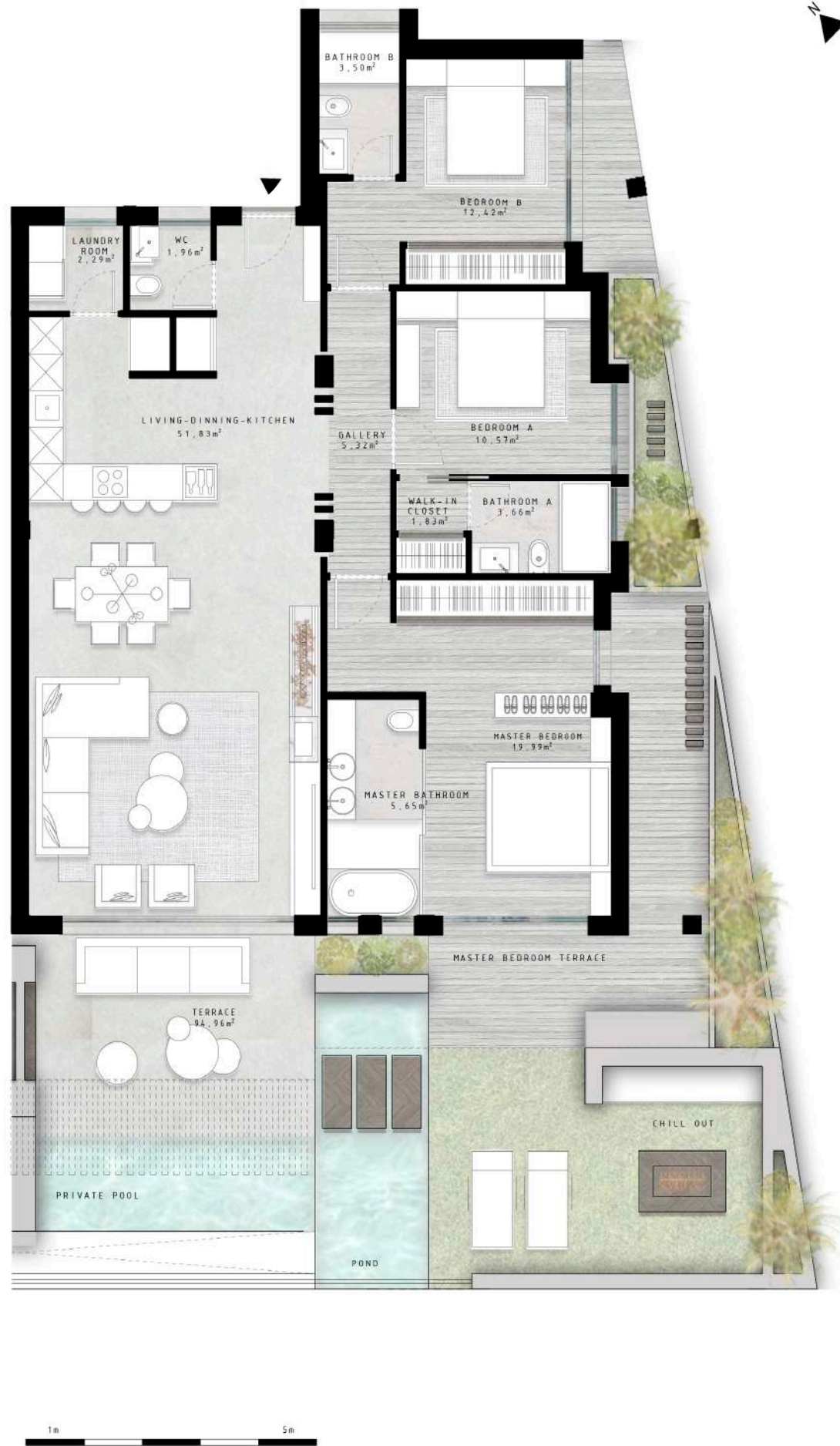
Mediterranean Sea

VILLA PETRA

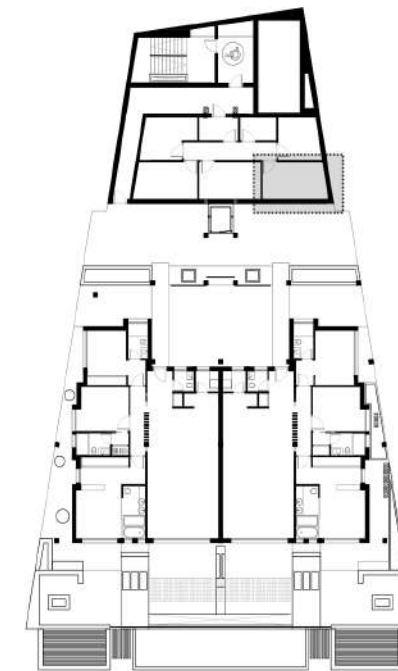
FLOOR -1 EAST



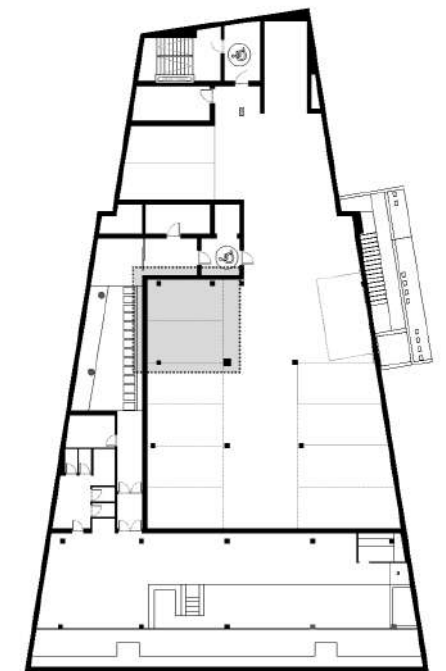
Drawings may differ from final results due to technical adjustments during Project Execution. Furnishing recreation made for decoration purposes.



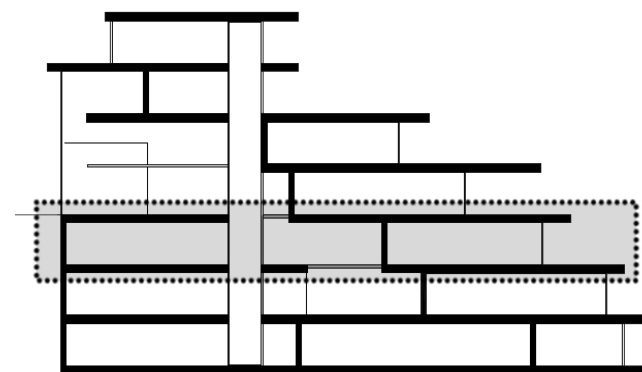
VILLA PETRA
floor -1



STORAGE ROOM
floor -1



GARAGE
floor -3



VILLA PETRA

Floor -1, east

Interior: 137,15 m²
Terrace: 94,96 m²

TOTAL BUILT SURFACE: 232,11 m²

* Usable Surface according to Real Decreto 218/2005: 166,51 m²

Storage room: 11,12 m²

Garage 1: 15,36 m²

Garage 2: 15,22 m²

*This apartment comes with two garage parking spaces.

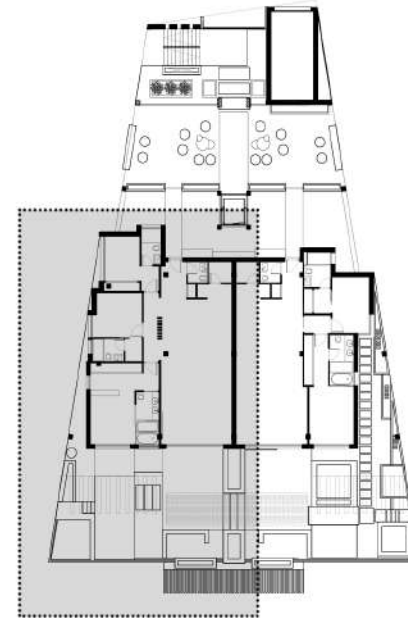
Mediterranean Sea

VILLA CINERE

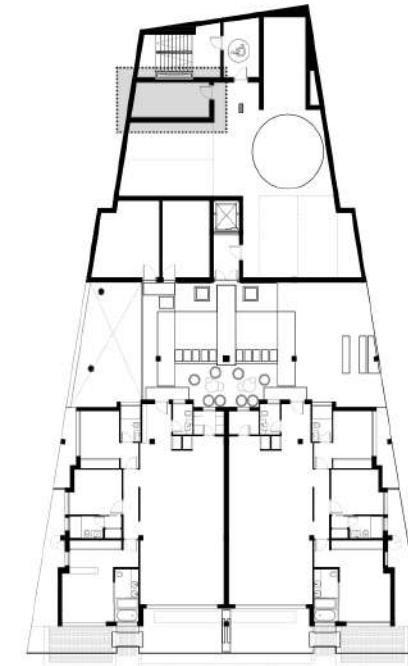
FLOOR 0 WEST



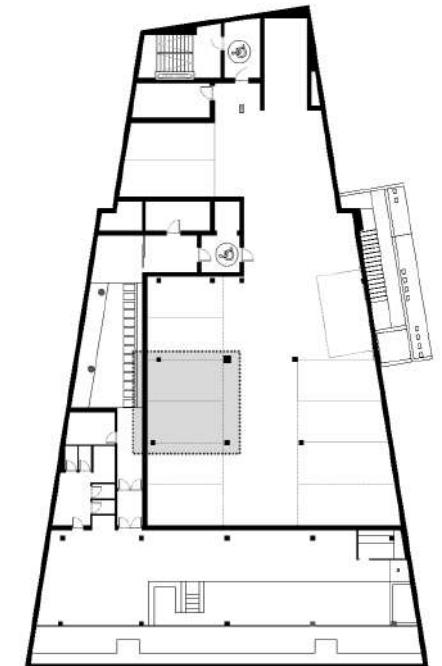
Drawings may differ from final results due to technical adjustments during Project Execution. Furnishing recreation made for decoration purposes.



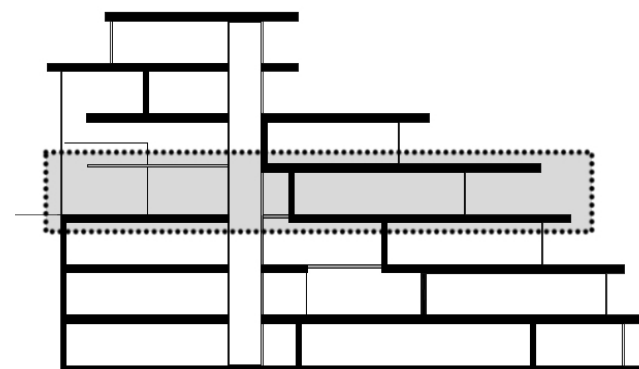
VILLA CINERE
floor 0



STORAGE ROOM
floor -1



GARAGE
floor -3



VILLA CINERE

Floor 0, west

Interior: 140,14 m²
Terrace: 101,53 m²

TOTAL BUILT SURFACE: 241,67 m²

* Usable Surface according to Real Decreto 218/2005: 173,22 m²

Storage room: 12,84 m²

Garage 1: 15,35 m²

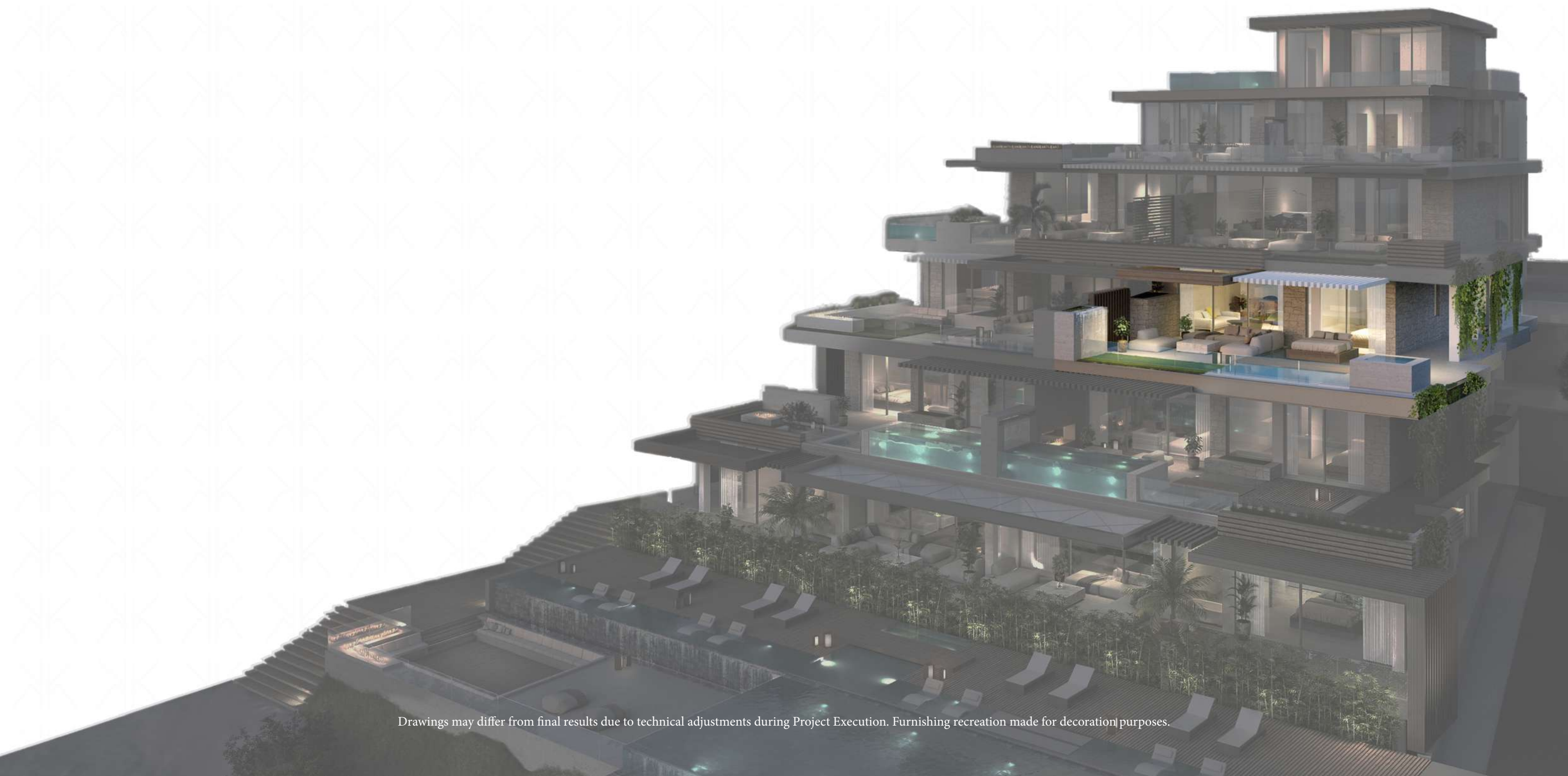
Garage 2: 15,36 m²

*This apartment comes with two garage parking spaces.

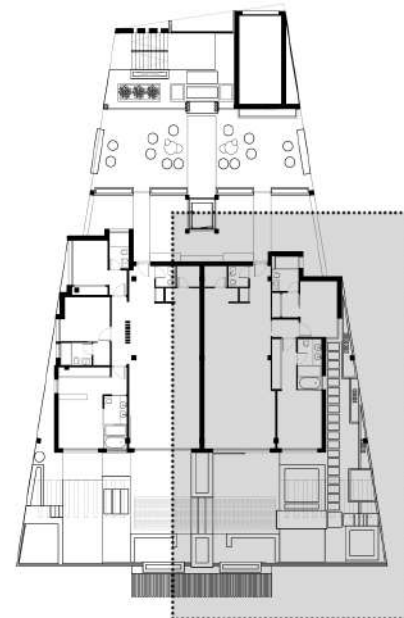
Mediterranean Sea

VILLA FLAMMA

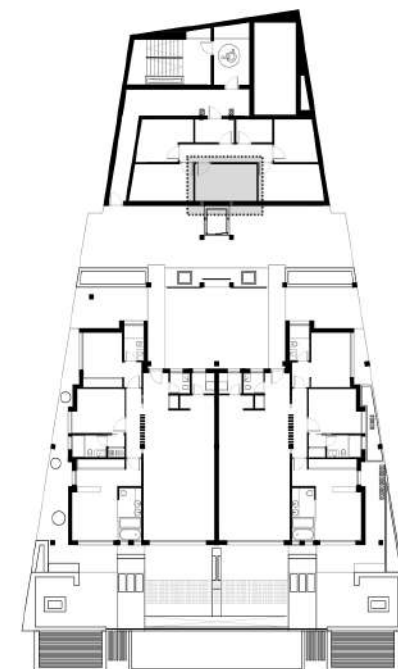
FLOOR 0 EAST



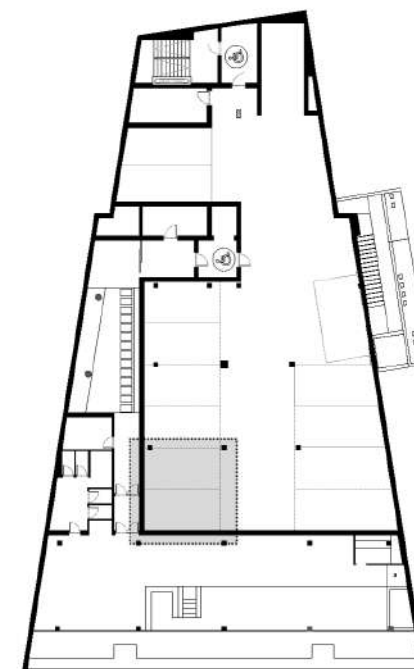
Drawings may differ from final results due to technical adjustments during Project Execution. Furnishing recreation made for decoration purposes.



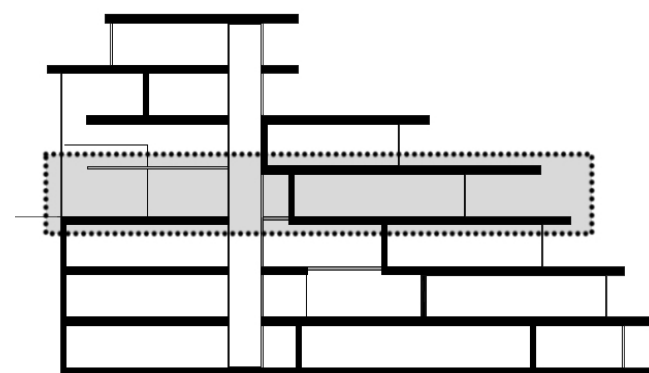
VILLA FLAMMA
floor 0



STORAGE ROOM
floor -1



GARAGE
floor -3



VILLA FLAMMA

Floor 0, east

Interior: 117,92 m²
Terrace: 115,16 m²

TOTAL BUILT SURFACE: 233,08 m²

* Usable Surface according to Real Decreto 218/2005: 160,06 m²

Storage room: 11,10 m²
Garage 1: 15,40 m²
Garage 2: 15,36 m²

*This apartment come with two garage parking spaces.

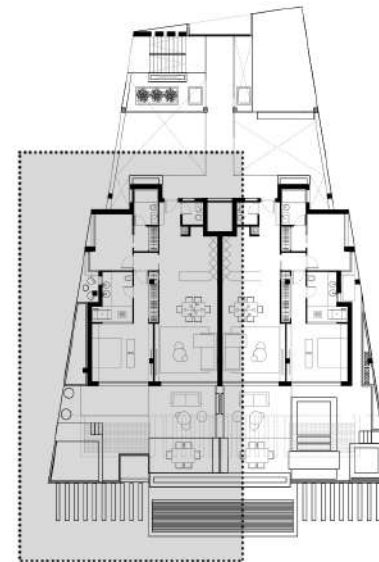
Mediterranean Sea

VILLA BRISA

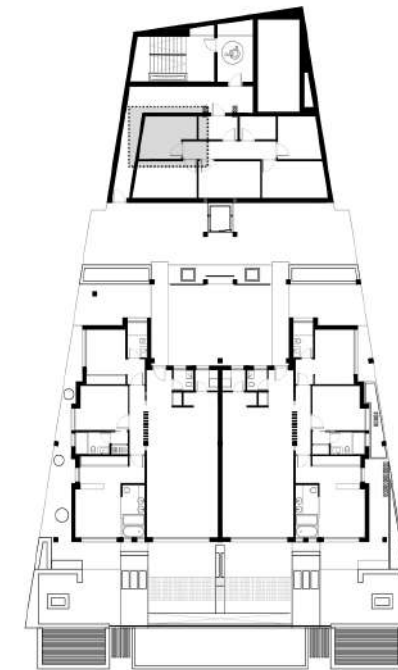
FLOOR +1 WEST



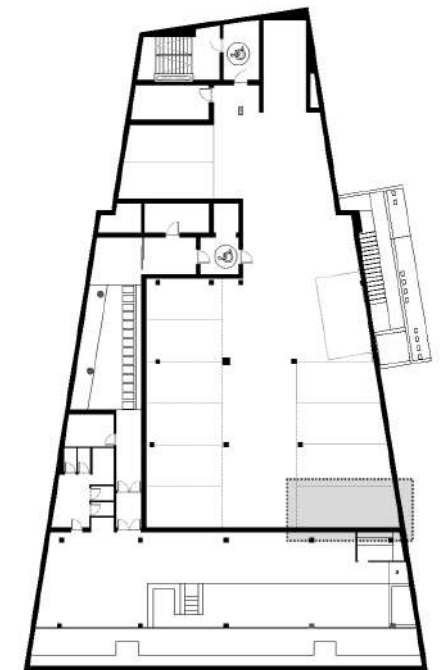
Drawings may differ from final results due to technical adjustments during Project Execution. Furnishing recreation made for decoration purposes.



VILLA BRISA
floor +1



STORAGE ROOM
floor -1



GARAGE
floor -3

VILLA BRISA

Floor +1, west

Interior: 114,57 m²

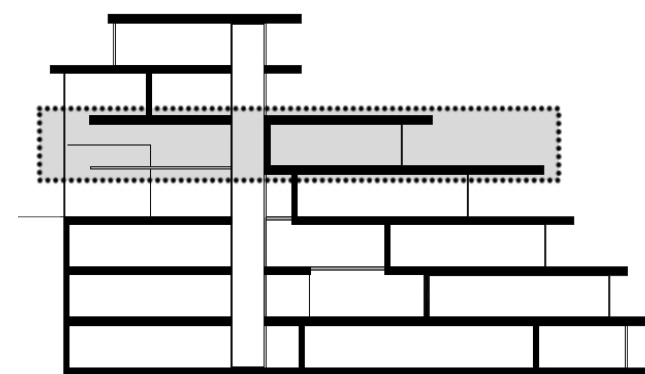
Terrace: 85,98 m²

TOTAL BUILT SURFACE: 200,55 m²

* Usable Surface according to Real Decreto 218/2005: 142,09 m²

Storage room: 9,71 m²

Garage 1: 16,05 m²



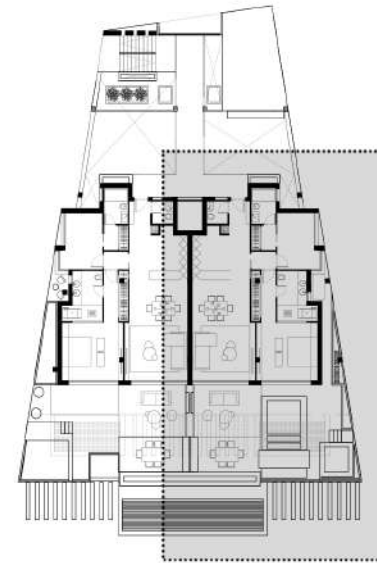
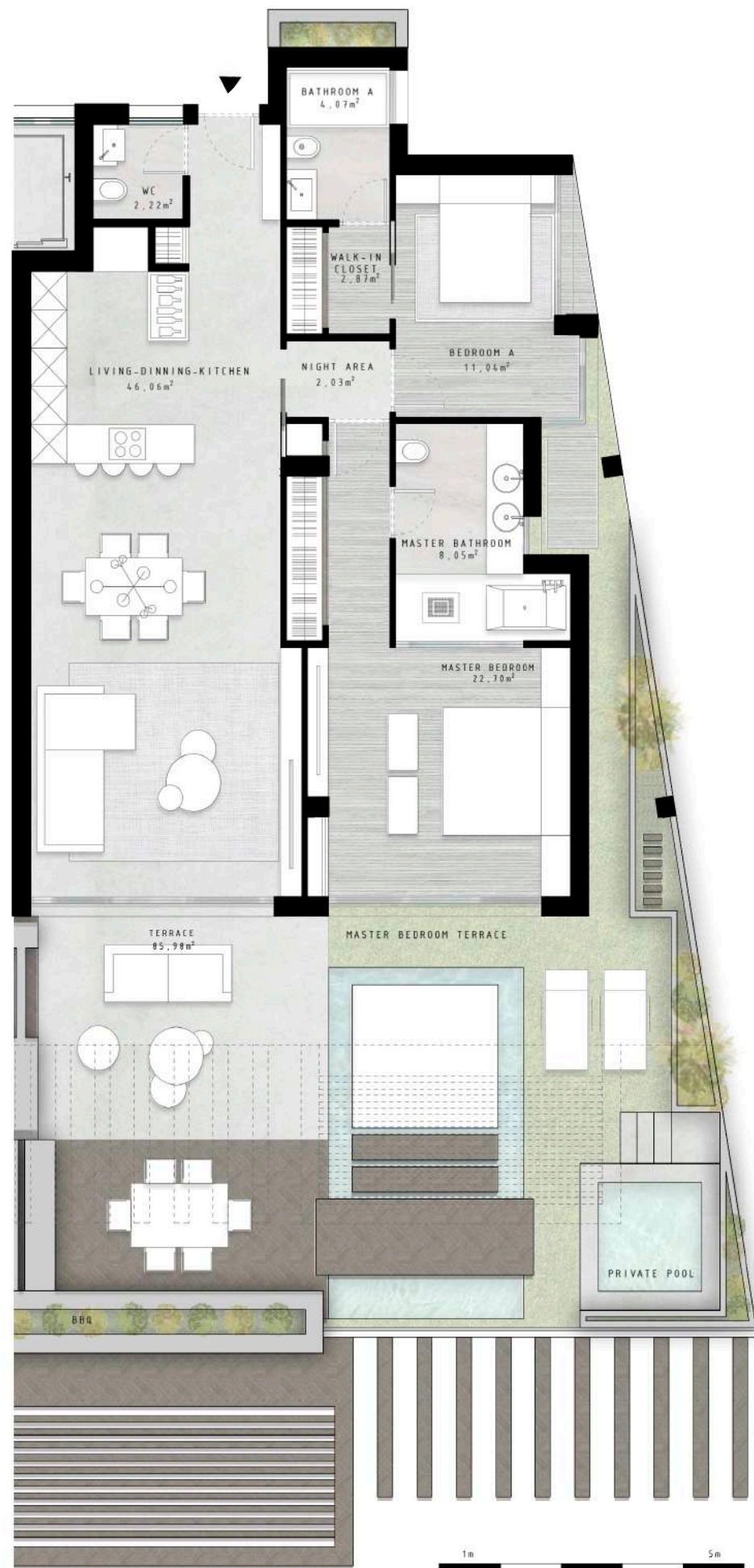
Mediterranean Sea

VILLA VENTU

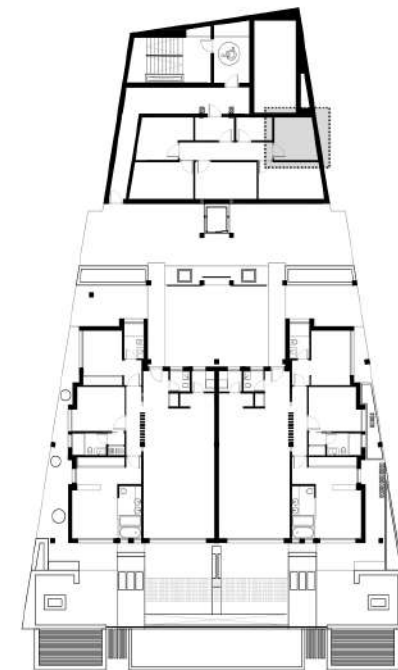
FLOOR +1 EAST



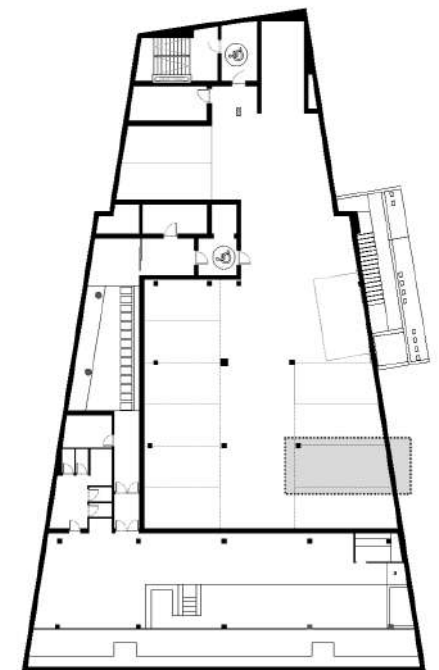
Drawings may differ from final results due to technical adjustments during Project Execution. Furnishing recreation made for decoration purposes.



VILLA VENTU
floor +1



STORAGE ROOM
floor -1



GARAGE
floor -3

VILLA VENTU

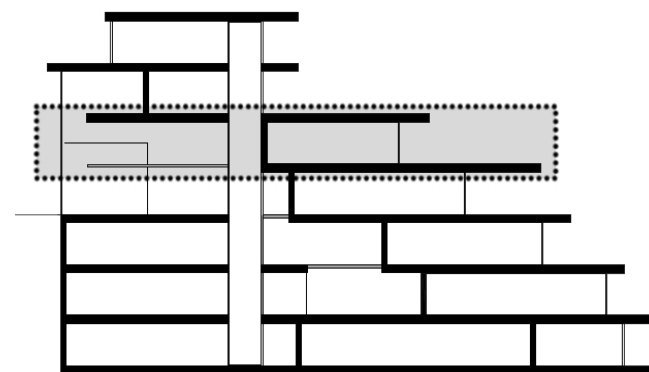
Floor +1, east

Interior: 114,57 m²
Terrace: 85,98 m²

TOTAL BUILT SURFACE: 200,55 m²

* Usable Surface according to Real Decreto 218/2005: 142,04 m²

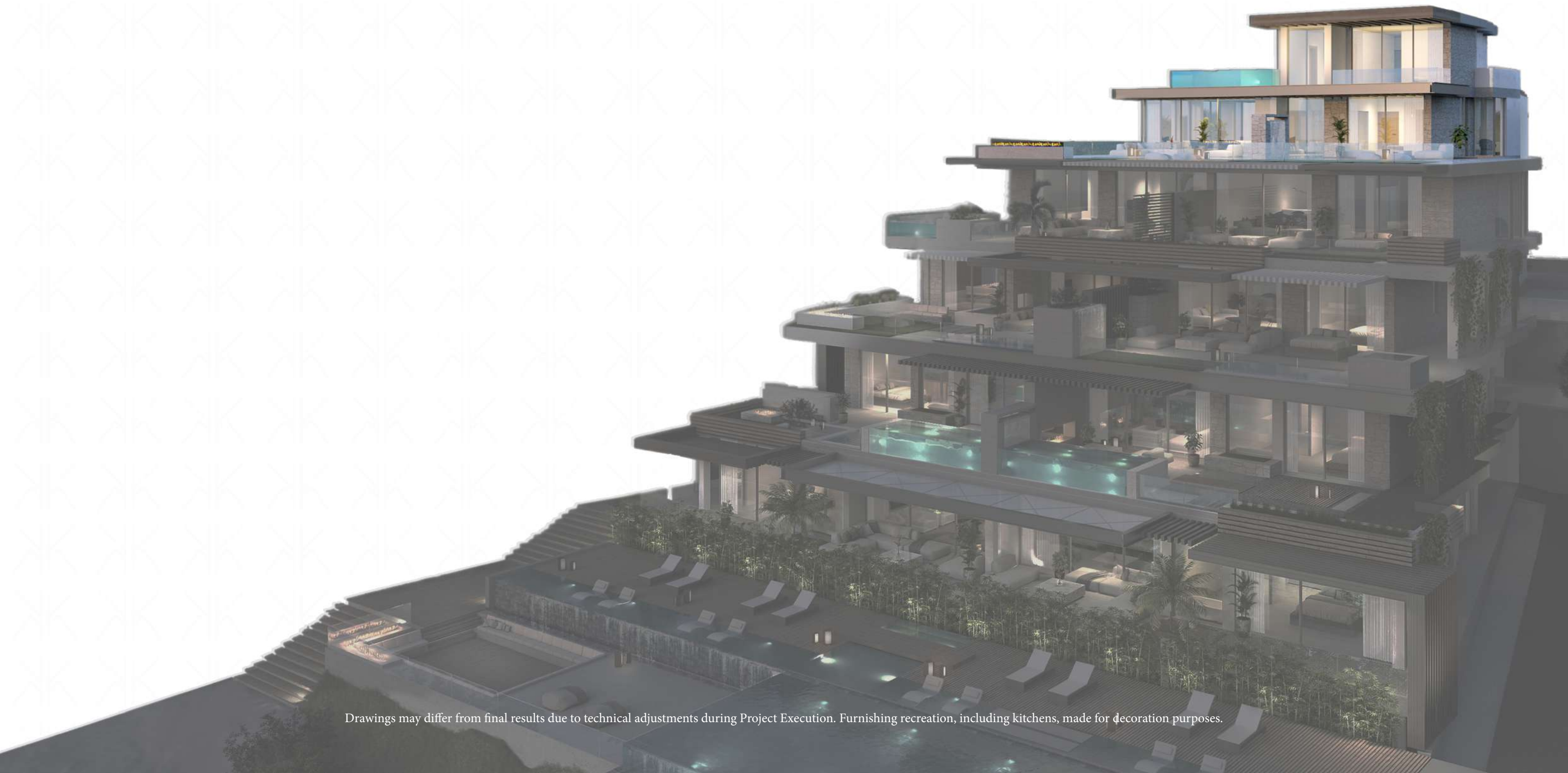
Storage room: 8,02 m²
Garage: 16,05 m²



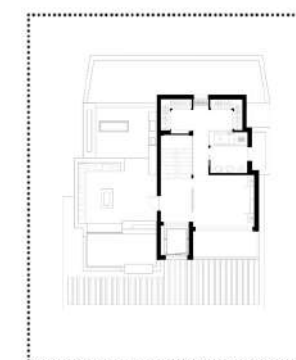
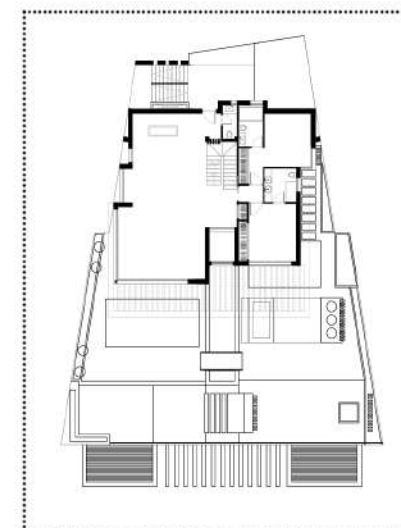
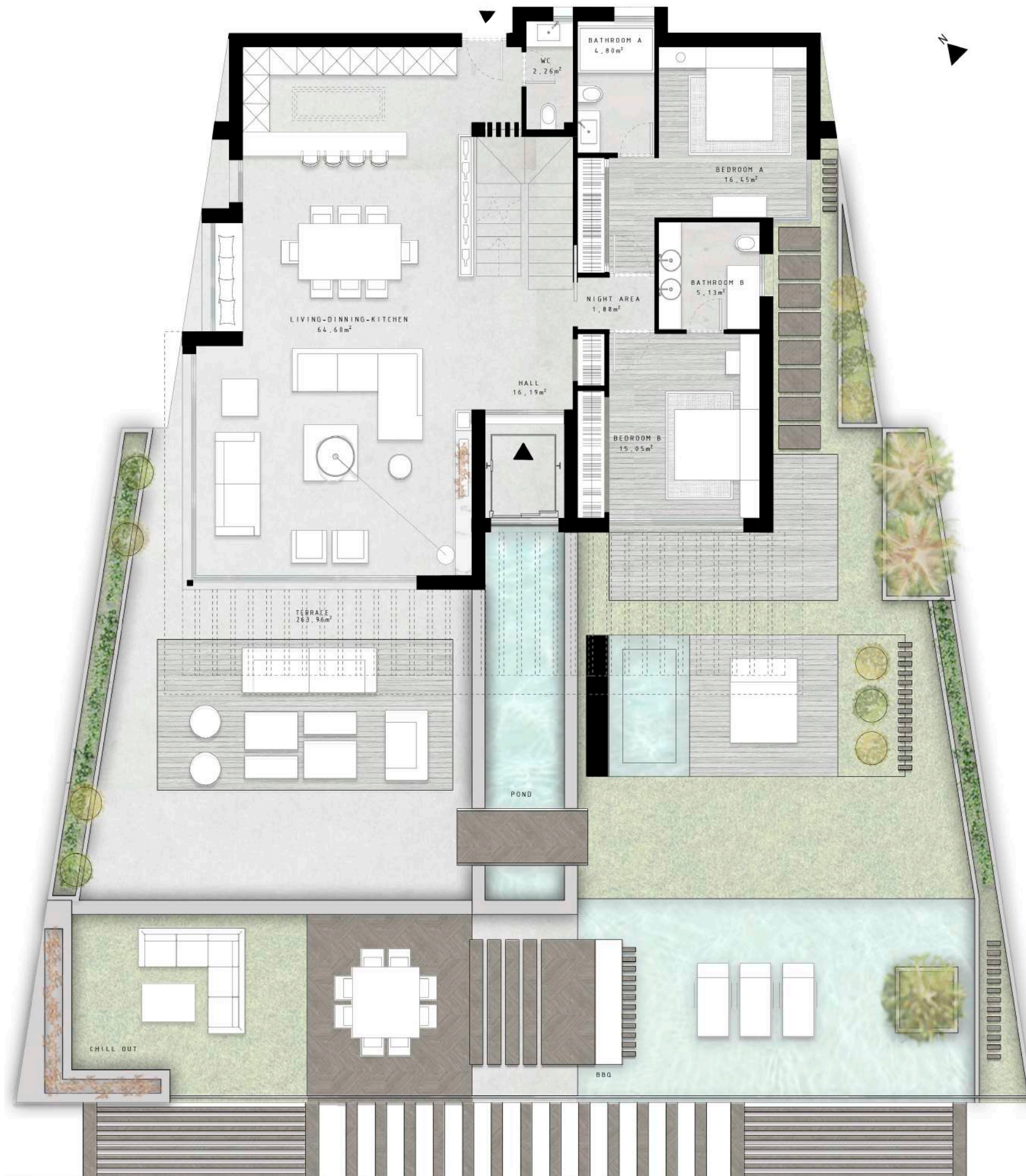
Mediterranean Sea

VILLA STELLA

PENTHOUSE, level 1



Drawings may differ from final results due to technical adjustments during Project Execution. Furnishing recreation, including kitchens, made for decoration purposes.



VILLA STELLA
floor +2

PENTHOUSE, LEVEL 1

Interior: 145,83 m²
Terrace: 263,96 m²

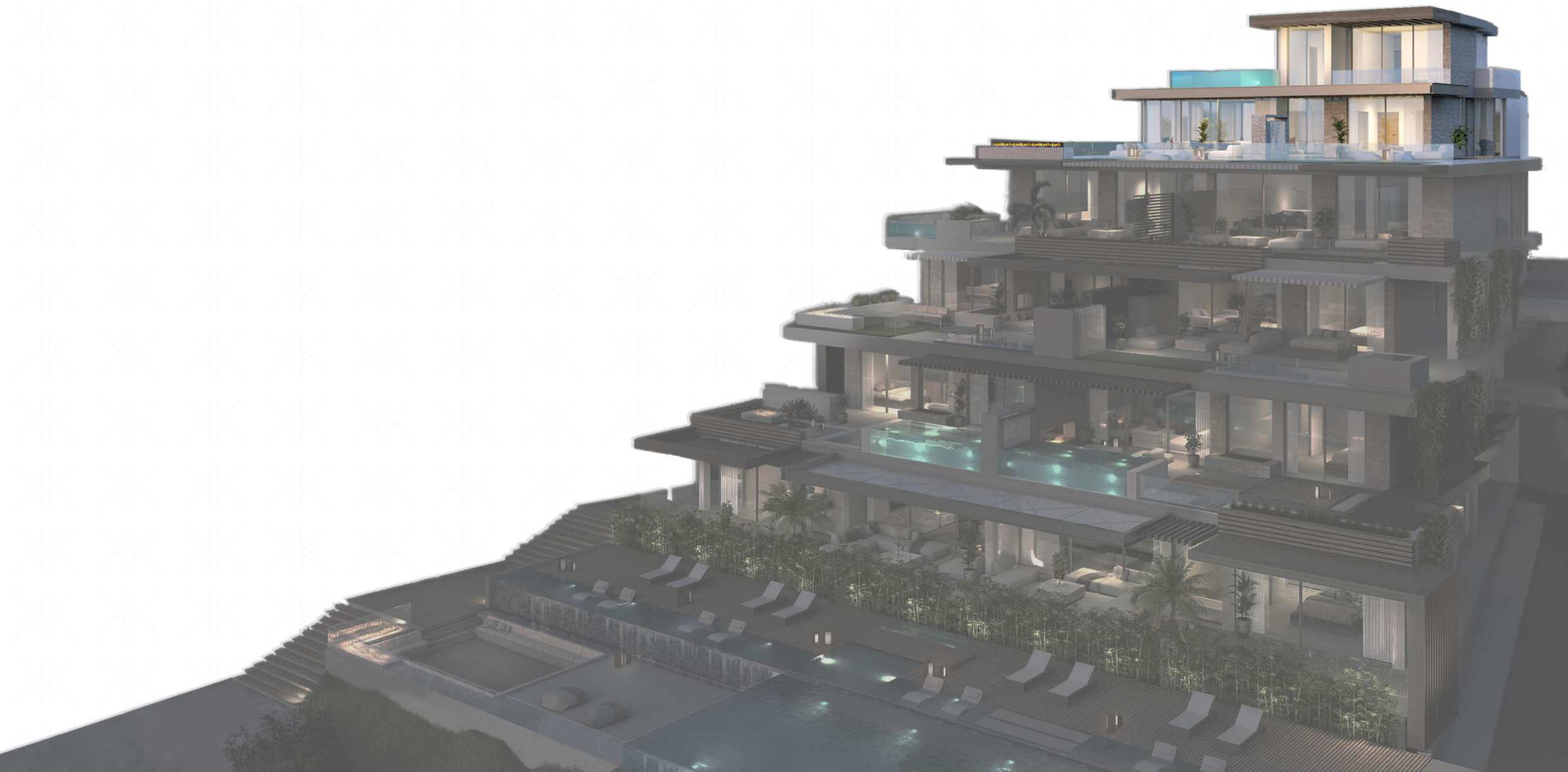
TOTAL BUILT SURFACE LEVEL 1: 409,79 m²



Drawings may differ from final results due to technical adjustments during Project Execution. Furnishing recreation made for decoration purposes.

VILLA STELLA

PENTHOUSE, level 2

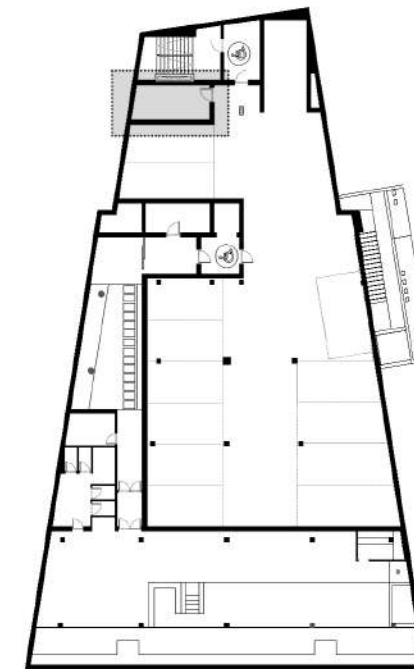




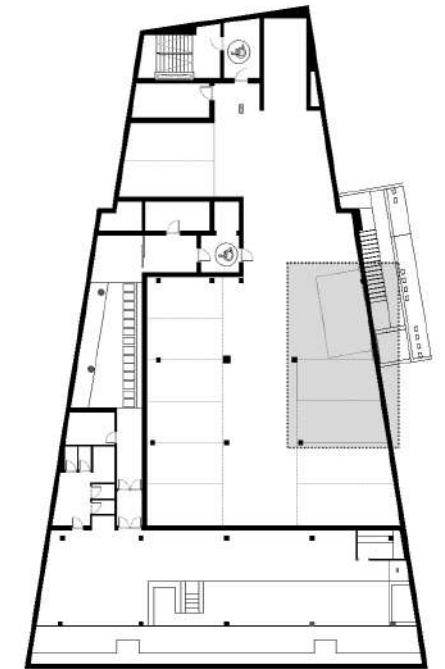
PENTHOUSE, LEVEL 2

Interior: 57,47 m²
Terrace: 80,17 m²

TOTAL BUILT SURFACE LEVEL 2: 137,64 m²



STORAGE ROOM
floor -3



GARAGE
floor -3

VILLA STELLA

Penthouse

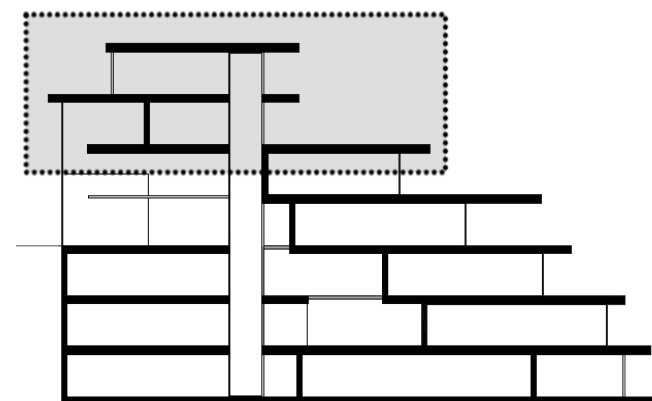
Interior: 203,30 m²
Terrace: 344,13 m²

TOTAL BUILT SURFACE: 547,43 m²

* Usable Surface according to Real Decreto 218/2005: 349,25 m²

Storage room: 12,84 m²
Garage 1: 32,10 m²
Garage 2: 18,63 m²

*This apartment come with three garage parking spaces.



Mediterranean Sea

