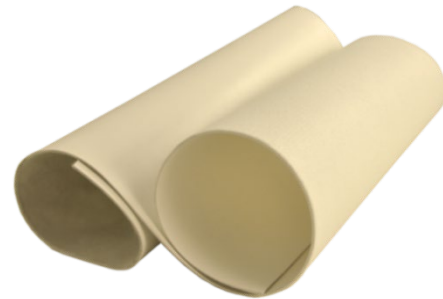


# DURO-FLEECE® COLORS 50-MIL MEMBRANE

**ADVANTAGES:**

Duro-Last® Duro-Fleece® Colors 50-Mil (DFC50) is an excellent choice for projects requiring a long-lasting roofing membrane. The combination of fleece and the proven performance of Duro-Last roofing membrane results in an ideal product for use in adhered and mechanically fastened applications over a wide variety of roof substrates. A complete line of custom-fabricated accessories is available for use with DFC50.



**DESCRIPTION:**

In addition to the fleece, DFC50 incorporates a weft-inserted, knitted scrim within PVC films to provide exceptional strength and waterproofing.

**PVC Film** – Proprietary thermoplastic PVC formulation of resins, plasticizers, stabilizers, biocides, flame retardants, and U.V. absorbents.

- PVC film above weft-inserted scrim – 26 mil, nominal

**Weft-Inserted Scrim** – An 18 x 9 polyester fabric construction with weft insertion provides superior tear and puncture resistance. The polyester thread is treated to prevent wicking.

**Fleece** – The 3.8-ounce per square yard needle-punched polypropylene fleece provides excellent properties for adhering to, or mechanically fastening over, a variety of substrates. Each roll of membrane has one selvage edge where the fleece is held back 2.25 inches to provide for hot-air welding to the underlying membrane.

**Total Membrane Thickness** – 50 mil, nominal

**Overall Thickness (with Fleece)** – 68 mil, nominal

**Weight** – 0.33 lb/ft<sup>2</sup>

**R-Value** – 0.1 R (0.1 ft<sup>2</sup>·°F·hr/Btu)

**Packaging** – DFC50 is supplied in the roll sizes shown below. A full pallet contains ten rolls.

ROLL DIMENSIONS		
Dimensions	Approximate Coverage <sup>1</sup>	Approximate Weight
120 in. x 100 ft	975 ft <sup>2</sup>	330 lb
60 in. x 100 ft	475 ft <sup>2</sup>	165 lb

<sup>1</sup> Assuming 3-inch overlap

**Overlap Line** – A line, 6 inches from one edge of the sheet, is factory-applied to the top of the sheet to assist in maintaining proper overlap between sheets.

**Colors\*** – Same top and bottom surface color.

\* DFC50 is available in the following colors by special order. Contact sales department for more information.



**LEED-NC & LEED-EB Credits** – Light tan DFC50 membrane alone can obtain 1 credit in either U.S. Green Building Council's LEED-NC or LEED-EB programs. In combination with other design criteria the membrane may help attain many other credits.

LEED CREDITS	
LEED-NC Credit Category	Duro-Last Attribute
Sustainable Sites Heat Island Reduction	Solar Reflective Index (SRI) = 88
LEED-EB Credit Category	Duro-Last Attribute
Sustainable Sites Heat Island Reduction	Solar Reflective Index (SRI) = 88

**ENERGY EFFICIENCY:**

Light tan DFC50 is an excellent product for complying with California Title 24, LEED® and other energy efficiency programs requiring the use of a highly reflective roof membrane.

COOL ROOF RATING COUNCIL (CRRC)							
Color	CRRC ID	Solar Reflectance		Thermal Emittance		Solar Reflective Index (SRI)	
		Initial	3-yr	Initial	3-yr	Initial	3-yr
Blue	0610-0015	0.16	0.15	0.89	0.89	13	12
Copper	0610-0016	0.19	0.18	0.89	0.89	17	16
Charcoal	0610-0013	0.09	0.10	0.86	0.89	3	5
Green	0610-0012	0.08	0.08	0.88	0.88	3	3
Light Gray	0610-0018	0.46	0.38	0.89	0.89	53	43
Patina	0610-0019	0.34	0.31	0.89	0.89	37	33
Light Tan	0610-0014	0.72	0.58	0.85	0.88	88	68
Bright Red	0610-0027	0.43	0.39	0.89	0.88	49	42
Brown	0610-0024	0.09	0.09	0.89	0.88	4	4
Colonial Red	0610-0026	0.15	0.14	0.89	0.88	12	11
Midnight Bronze	0610-0025	0.31	0.29	0.89	0.88	33	29

**WARRANTY:**

The following warranties are available for projects utilizing DFC50. Contact Duro-Last for warranty details.

**Consequential damage coverage is not available for Duro-Fleece installations.**

AVAILABLE WARRANTIES		
Supreme	Not applicable for this product	
Ultra	15-Year NDL High Wind Warranty	20-Year NDL High Wind Warranty
Basic	15-Year NDL Warranty	20-Year NDL Warranty
Residential	15-Year Residential Material Limited Warranty	20-Year Residential Material Limited Warranty

**CODES AND STANDARDS:**

Underwriters Laboratories (US & Canada), UL Evaluation Report (ER10128), FM Approvals, Canadian Construction Materials Centre (CCMC 14011-L), State of Florida, Miami-Dade County, Texas Department of Insurance.

**STORAGE:**

Store rolls lengthwise on pallets. Use tarps to keep rolls dry.

**MEMBRANE ATTACHMENT:**

**Adhered** – DFC50 may be adhered to a variety of roof decks, walls, cover boards and insulations. It may be adhered directly to an existing built-up roof (BUR) by using approved membrane adhesives. Adhesion pull tests are required prior to adhering to BUR. The tests must be performed on a 1 x 1-foot area and receive minimum values of 150 pounds per square foot. Refer to the Adhered Duro-Fleece Roofing System Specification for substrate preparation, acceptable adhesives and system requirements.

**Mechanically Fastened** – DFC50 may be mechanically fastened to a variety of roof deck and wall materials. An appropriate slip sheet, insulation or cover board may be required. Refer to the Roll Good Mechanically Fastened Roofing System Specification for system requirements.

**PHYSICAL PROPERTIES:**

DFC50 has been subjected to the tests required by ASTM D4434 “Standard Specification for Poly (Vinyl Chloride) Sheet Roofing” and has been classified as a Type III, internally reinforced sheet with a fabric backing. DFC50 also meets or exceeds all ASTM D4434 Type II requirements.

The results of each test are listed below. ASTM’s Overall Thickness requirements for the membrane are plus or minus 10% (nominal) of the listed Typical Value.

DFC50 PHYSICAL PROPERTIES				
Physical Property	Test Method	ASTM D4434 Requirement	Result	Typical Value
Overall Thickness	ASTM D751	≥ 0.045 and ≤ 0.055 in. (≥ 45 and ≤ 55 mil)	PASS	0.050 in. (50 mil), nominal (With fleece: 68 mil)
Thickness Over Scrim	ASTM D7635	≥ 0.016 in.	PASS	0.026 in. (26 mil)
Breaking Strength <sup>1</sup>	ASTM D751 Grab Method	≥ 200 lbf./in.	PASS	500 x 344 lbf./in.
Elongation <sup>1</sup>	ASTM D751 Grab Method	≥ 15%	PASS	32% x 77%
Seam Strength	ASTM D751 Grab Method	≥ 375 lbf. (75% of Breaking Strength)	PASS	405 lbf.
Tear Strength <sup>1</sup>	ASTM D751 Procedure B	≥ 45 lbf.	PASS	67 x 160 lbf.
Low Temp. Bend	ASTM D2136	Must pass at -40° F	PASS	PASS
Heat Aging	ASTM D3045	Conditioned for 56 days in oven maintained at 176° F	PASS	PASS
Accelerated Weathering	ASTM G155	10,000 hours total test time. Irradiance level of 0.35 W/m <sup>2</sup> -340nm. Cycle: 102 minutes light, 18 minutes light + H <sub>2</sub> O spray, 63±2.5° C black panel, 30±5% RH	PASS	PASS
Dimensional Stability <sup>1</sup>	ASTM D1204	Conditioned for 6 hours in oven maintained at 176° F. Allowable change: ≤ 0.5%	PASS	0.10% x 0.10%
Water Absorption	ASTM D570	Immersed in water at 158° F for 168 hours. Allowable weight change: ≤ 3%	PASS	2.6%
Static Puncture	ASTM D5602	≥ 33 lbf.	PASS	PASS
Dynamic Puncture	ASTM D5635	≥ 14.7 ft-lbf.	PASS	PASS

<sup>1</sup> Typical values are shown for both machine and cross machine directions. The machine direction results are listed first.

ADDITIONAL TESTS		
Fungi Resistance	ASTM G21	No Sustained Growth or Discoloration
Moisture Vapor Transmission	ASTM E96, Proc. B, Method A	< 0.35 U.S. perms



Duro-Last, the “World’s Best Roof”, and Duro-Fleece are trademarks in the Amrize portfolio. All other trademarks are property of their respective owners.