

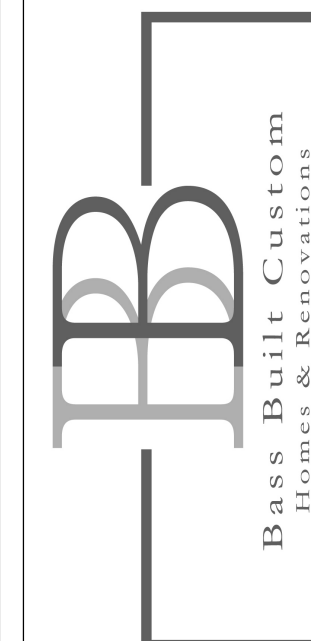
738 Cutter Court
Kure beach NC 28449



Erin LoBalbo
Residential Designer

COVER PAGE

738 Cutter Court
Kure Beach, NC 28449

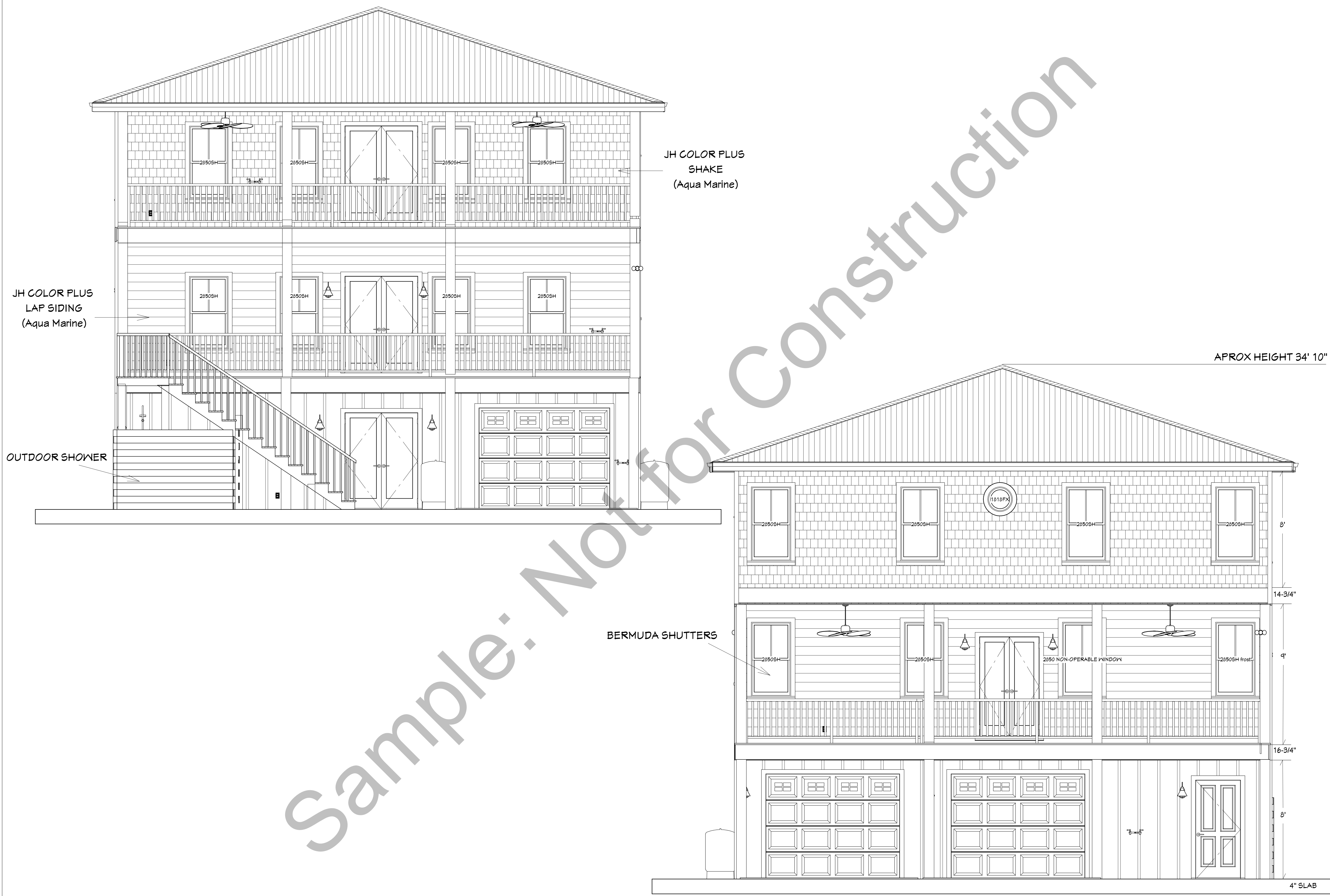


SCALE:

Not to Scale

SHEET:

A-1



Erin LoBalbo
Residential Designer

FRONT & REAR
ELEVATIONS

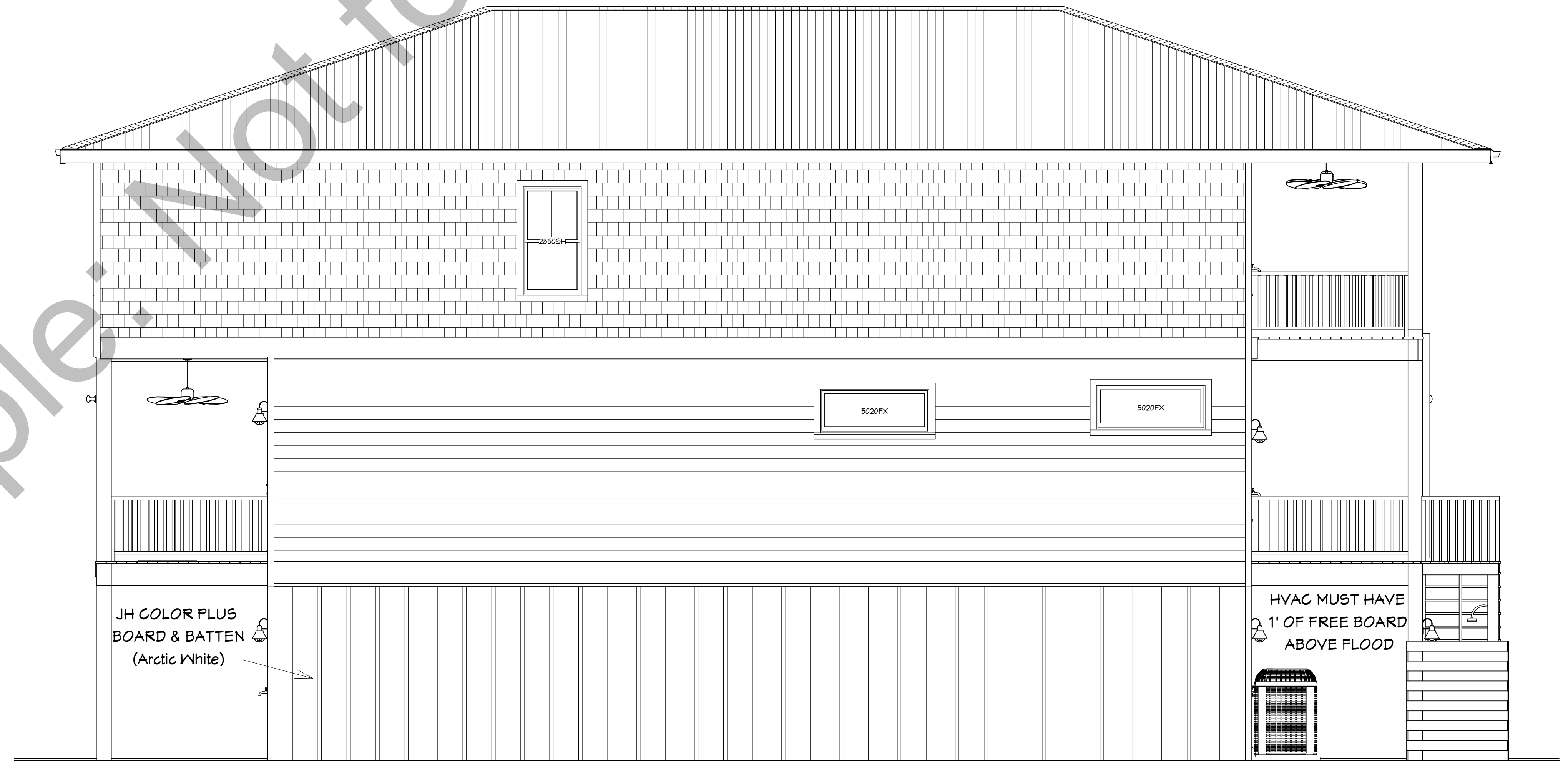
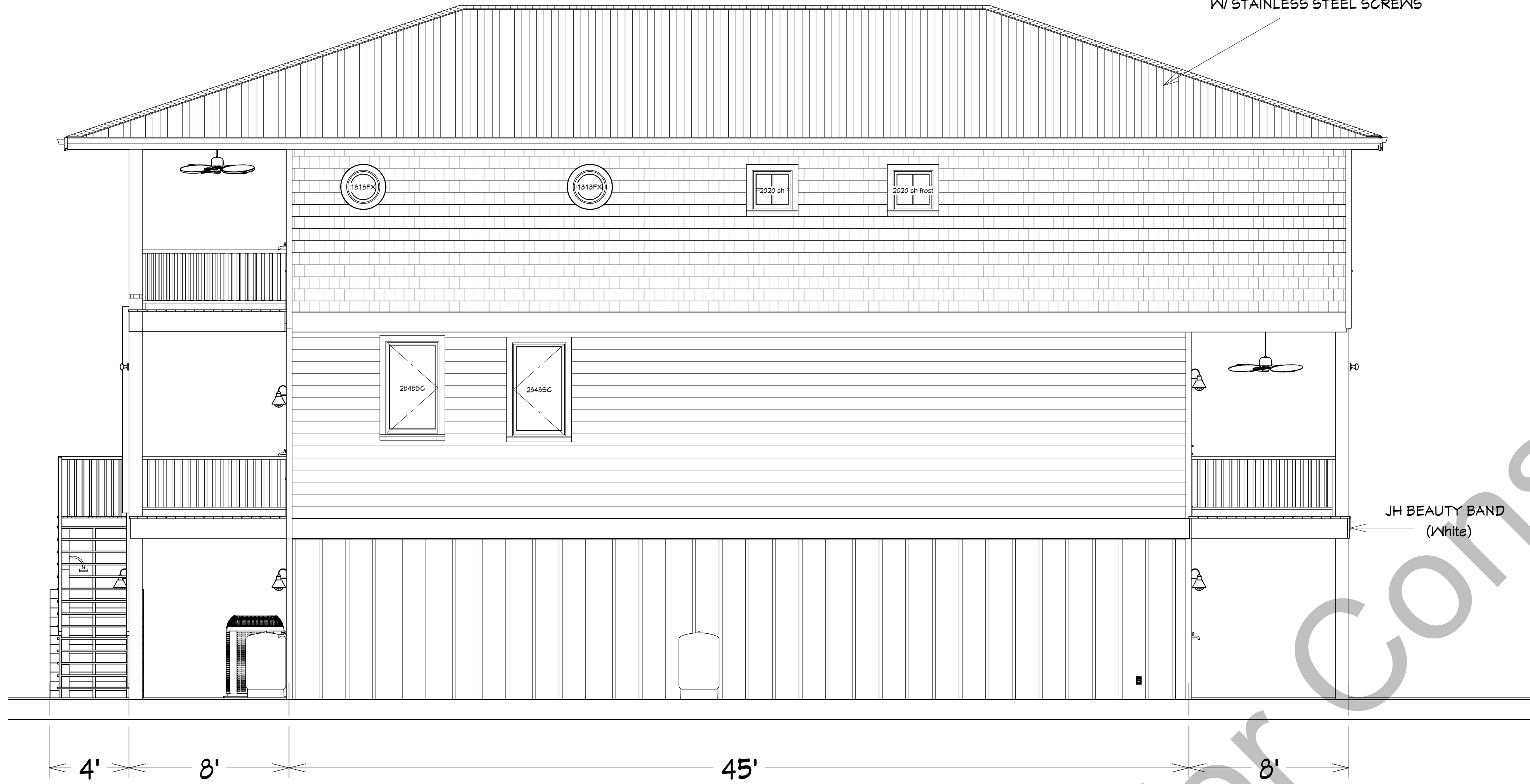
738 Cutter Court
Kure Beach, NC 28449



SCALE:
Not to Scale

SHEET:
A-2

2GG MULTI RIB METAL ROOF
W/ STAINLESS STEEL SCREWS

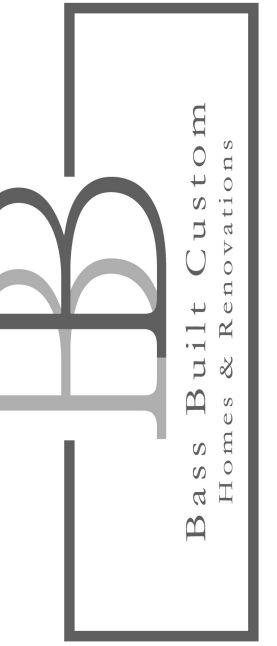


Sample: Not for Construction

Erin LoBalbo
Residential Designer

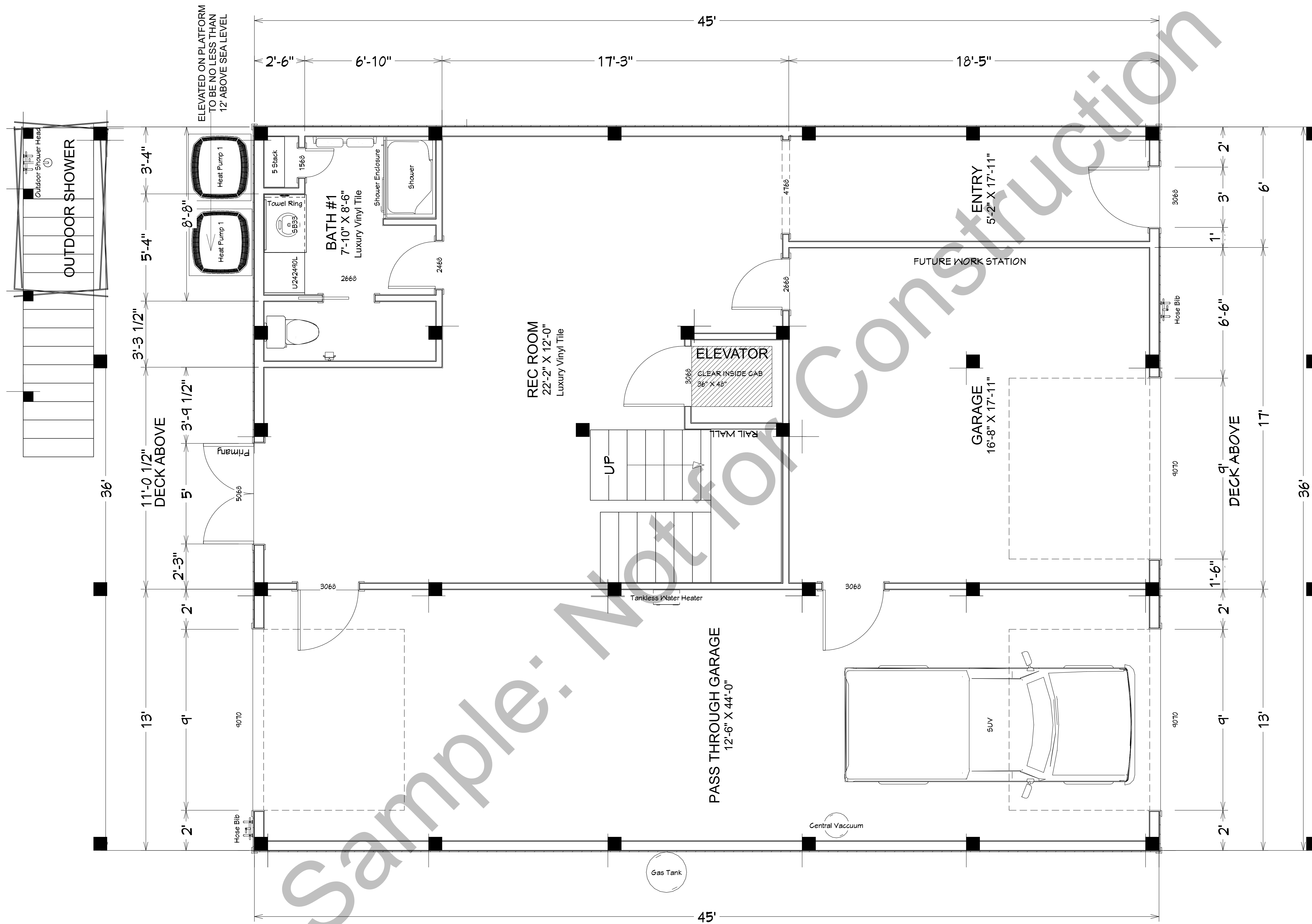
LEFT & RIGHT
ELEVATIONS

738 Cutter Court
Kure Beach, NC 28449



SCALE:
Not to Scale

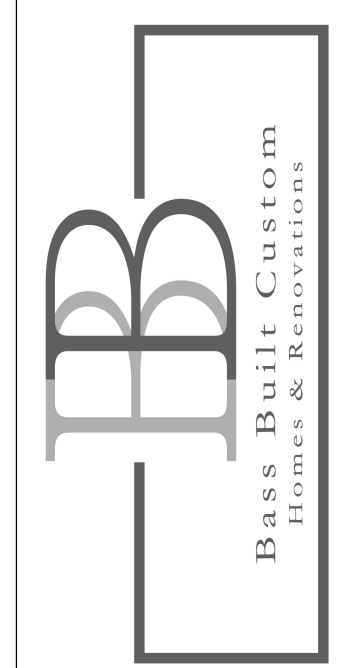
SHEET:
A-3



Ground Floor
 Garage/Unheated Sqft = 877 sqft
Ground Floor Heated Sqft = 730sqft
 First Floor Heated Sqft = 1,620 sqft
Total House Heated Sqft = 4,258 sqft
 8' Ceiling Heights & 4" Exterior Walls

SCALE:
 Not to Scale

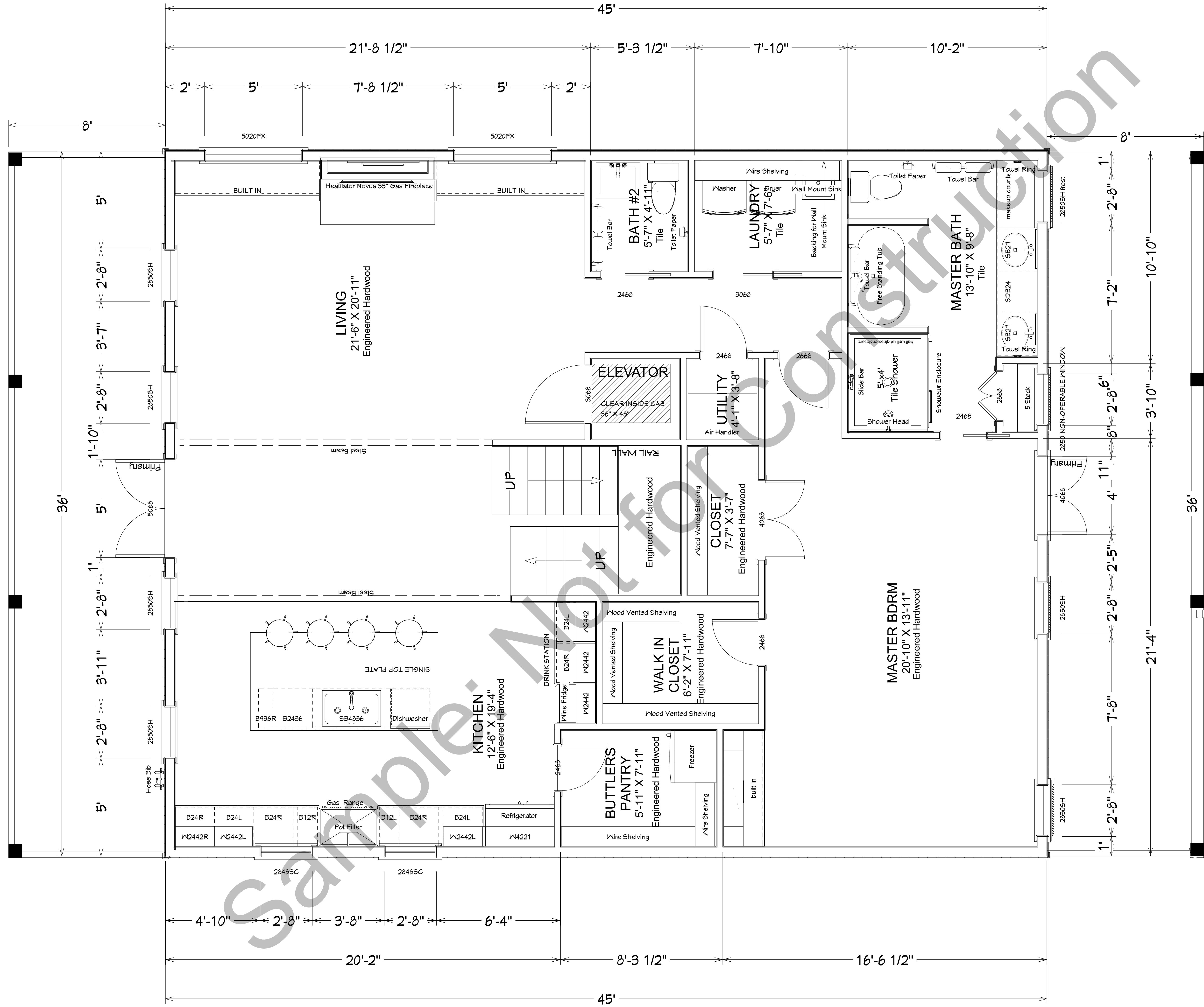
SHEET:
A-4



738 Cutter Court
 Kure Beach, NC 28449

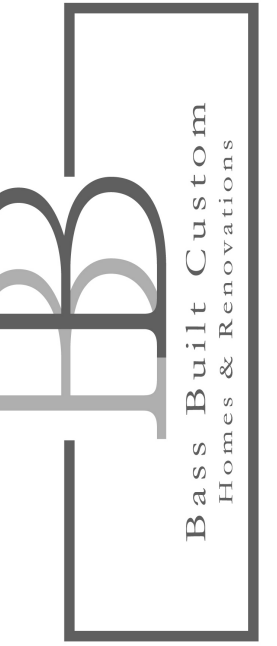
GROUND FLOOR

Erin LoBalbo
 Residential Designer



First Floor
 Garage/Unheated Sqft = 877 sqft
 Ground Floor Heated Sqft = 730 sqft
First Floor Heated Sqft = 1,620 sqft
Total House Heated Sqft = 4,258 sqft
 90" Ceiling Heights & 4" Exterior Walls

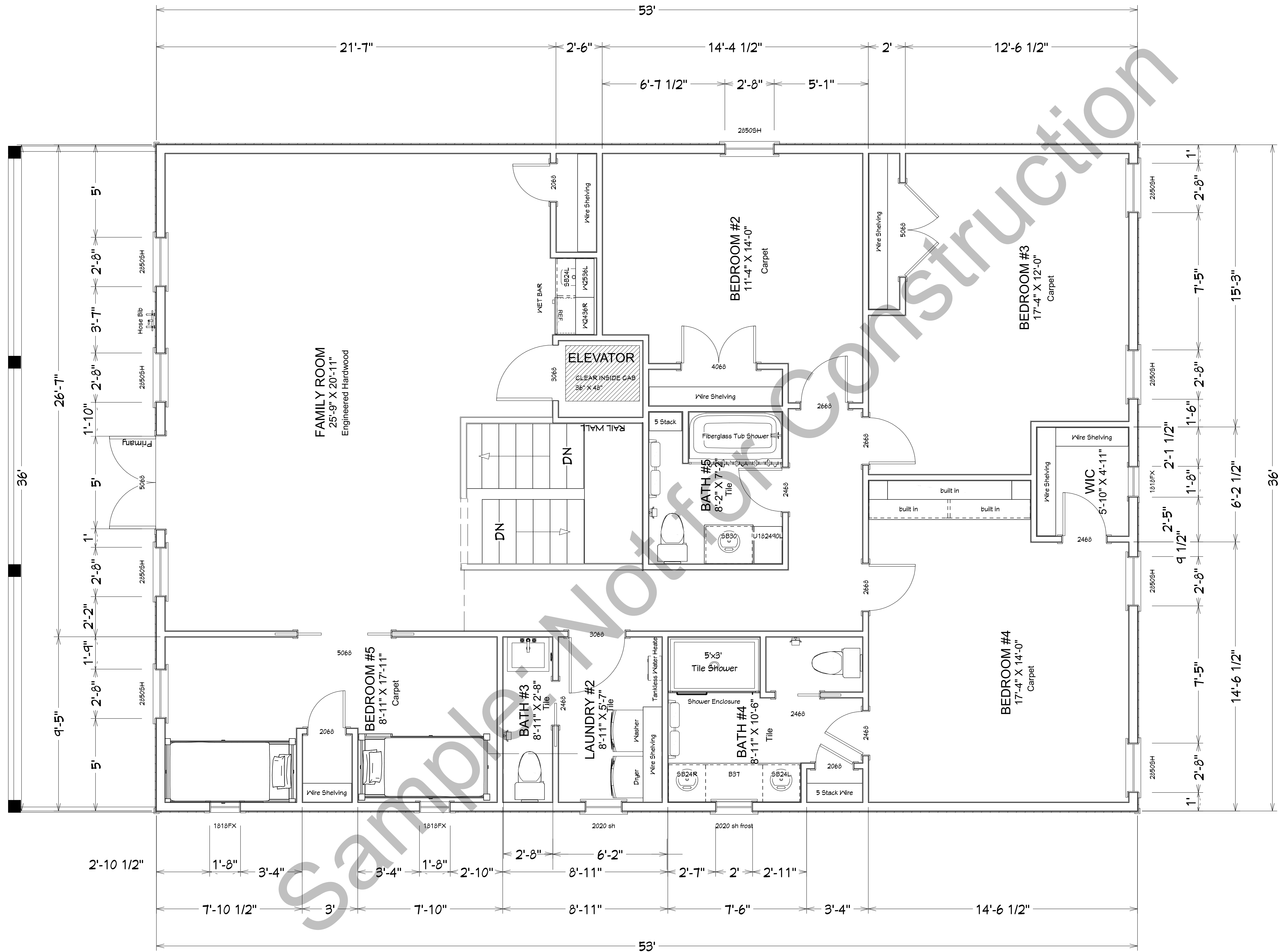
SCALE:
 Not to Scale
 SHEET:
A-5



738 Cutter Court
 Kure Beach, NC 28449

FIRST FLOOR

Erin LoBalbo
 Residential Designer



Second Floor
 Garage/Unheated Sqft = 877 sqft
 Ground Floor Heated Sqft = 730 sqft
 First Floor Heated Sqft = 1,620 sqft
Second Floor Heated Sqft = 1,908 sqft
Total House Heated Sqft = 4,258 sqft
 8'0" Ceiling Heights & 4" Exterior Walls

SCALE:
 Not to Scale

SHEET:
A-6

Erin LoBalbo
 Residential Designer

SECOND FLOOR

738 Cutter Court
 Kure Beach, NC 28449

