

Precision

Tomorrow's

Application

Technology

Tillage

Today

Systems

for your farm!

I have been developing the latest innovations by listening to and working with innovative farmers for over the past 25 years! This is a documentary of the cultivator refurbishing package that I am developing with Warsaw Welding to allow farmers to refurbish their old cultivators and make them work better than they did when they were new!



I was the Orthman rep in the 90's in the Carolinas and Georgia.

Pictured is one of Joel Boseman's Orthman cultivators that he has adapted rolling cultivator spiders to.

The wrap around parallel linkage has held up well for over 20 years.

Also pictured is a Norwest cultivator row unit that I have been selling for the past 2 seasons.



It has performed very well for Burch, Tyson, Fisher and Boseman Farms. Burch Farms liked theirs so well that they purchased a second 8 row machine this past fall.



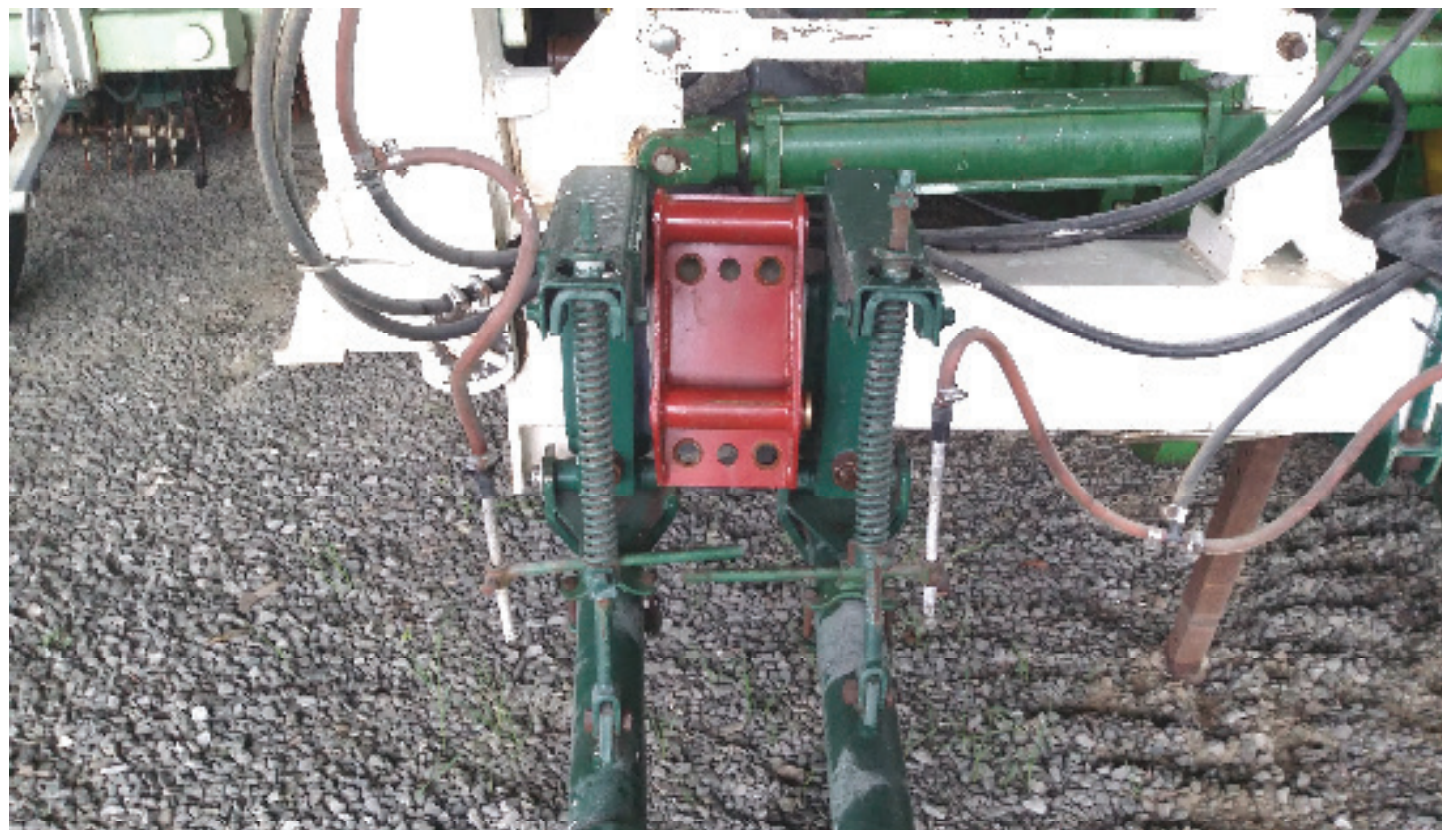
Pictured is the parallel linkage that Warsaw Welding and I built.

It has the following unique features:

- 1 – The bolt on plates not allow the head and nut of the bolt to rotate.**
- 2 – Increases strength by spreading the load to the bolt head and nut.**
- 3 – The down pressure spring tabs are formed, not welded.**

By utilizing the dimensions of the Norwest parallel linkage and saddle clamp and the Orthman down pressure spring tabs we have created, in my opinion the strongest linkage per pound ever built!

I call it the PATS “Northman” linkage.



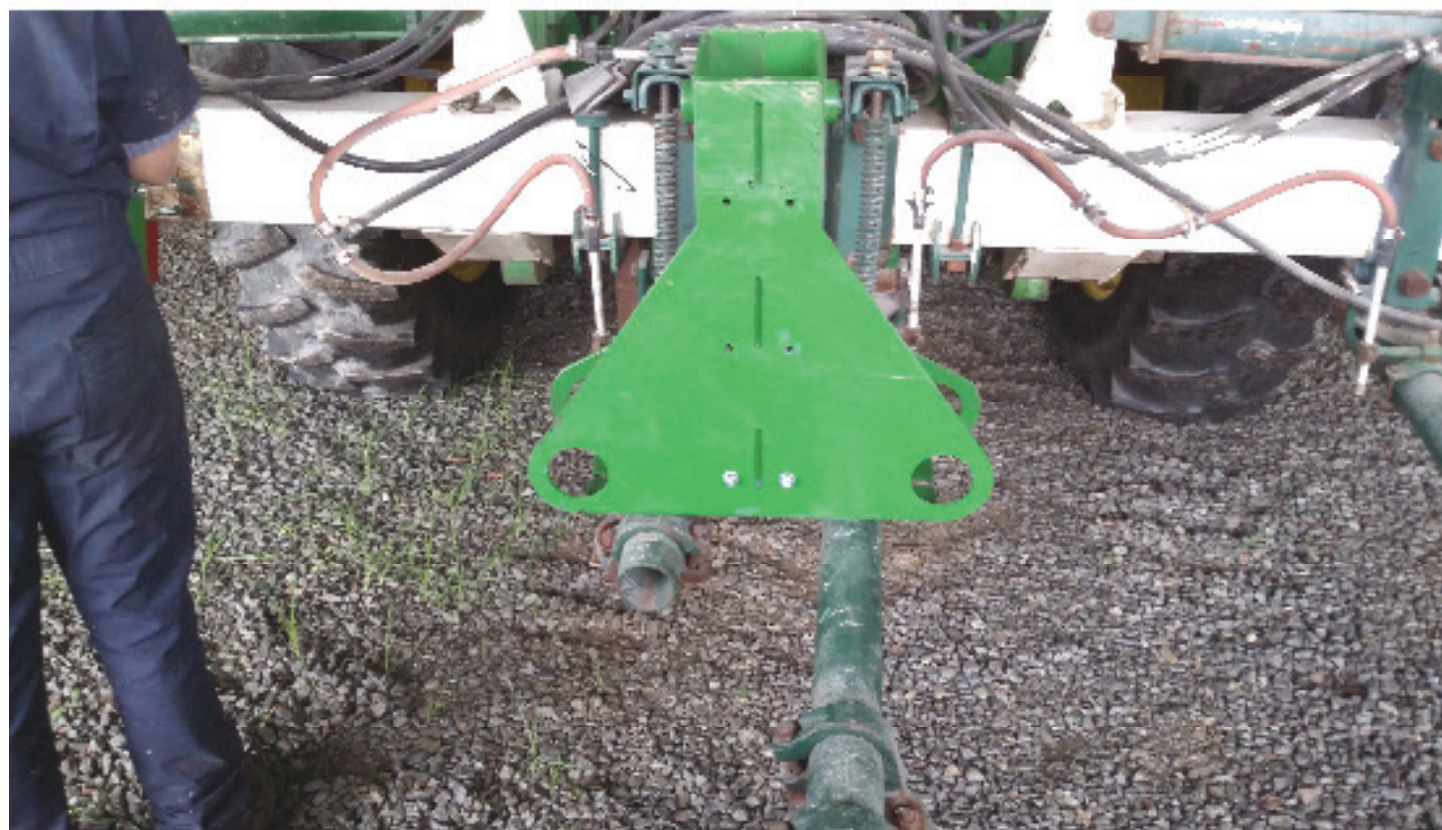
Pictured is the Norwest saddle clamp and PATS refurbishing row unit at Millstream Farms near Newton Grove, NC.

I am working with Henry Chancey, sons Richard and Thomas on refurbishing an 8 row on a 90 degree fold and an 8 row on a stacking toolbar.

We will be sourcing fabricated components from Warsaw Welding.

I will be assisting them with the welding, painting and assembly at a negotiated hourly rate.

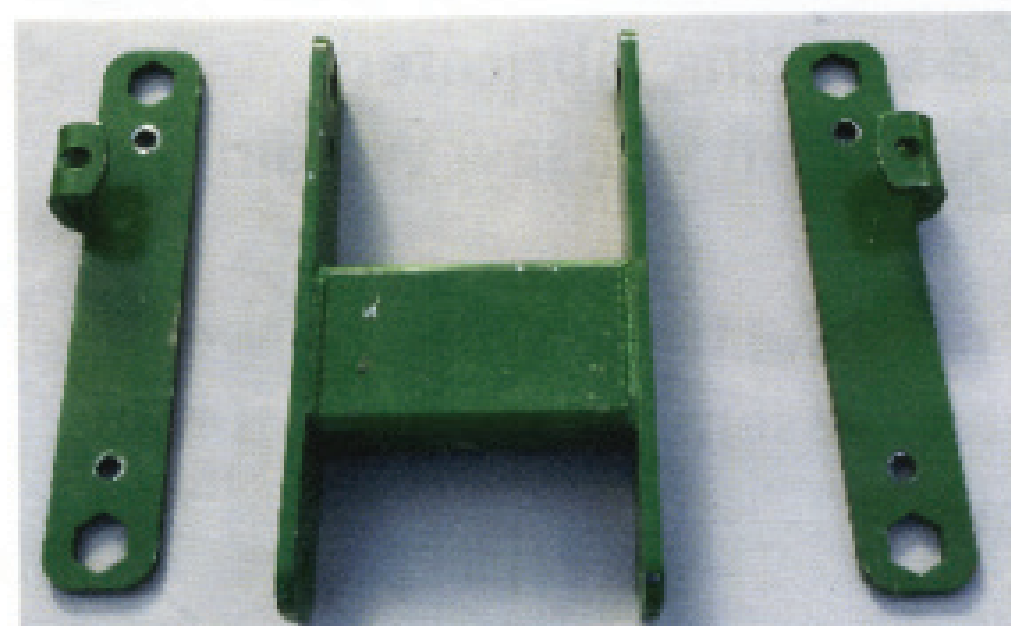
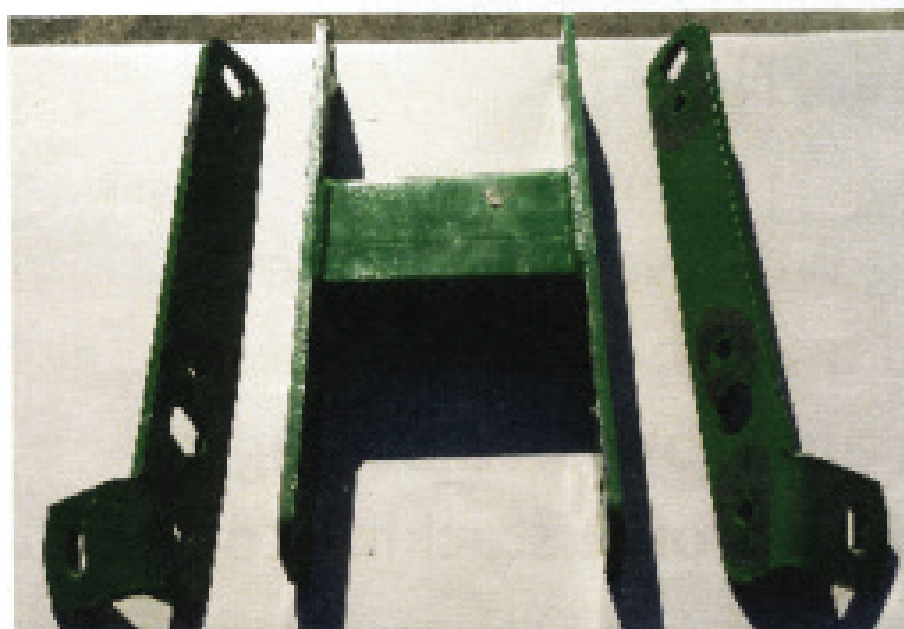
We will be sourcing Norwest spider components from Perkins Sales located in Bernie, MO.



PATS "Northman" Parallel Linkage Parts

Top Linkage

Part #	# Required Per Row	Description
2x2tube	1	2" x 4" x 3/16" wall tubing
TLIP	2	17" x 2.5" x 3/8" Inner Plates
LOPL	1	17" x 2.5" x 3/8" Left Outer Plate with Down Pressure Tab
LOPR	1	17" x 2.5" x 3/8" Right Outer Plate with Down Pressure Tab

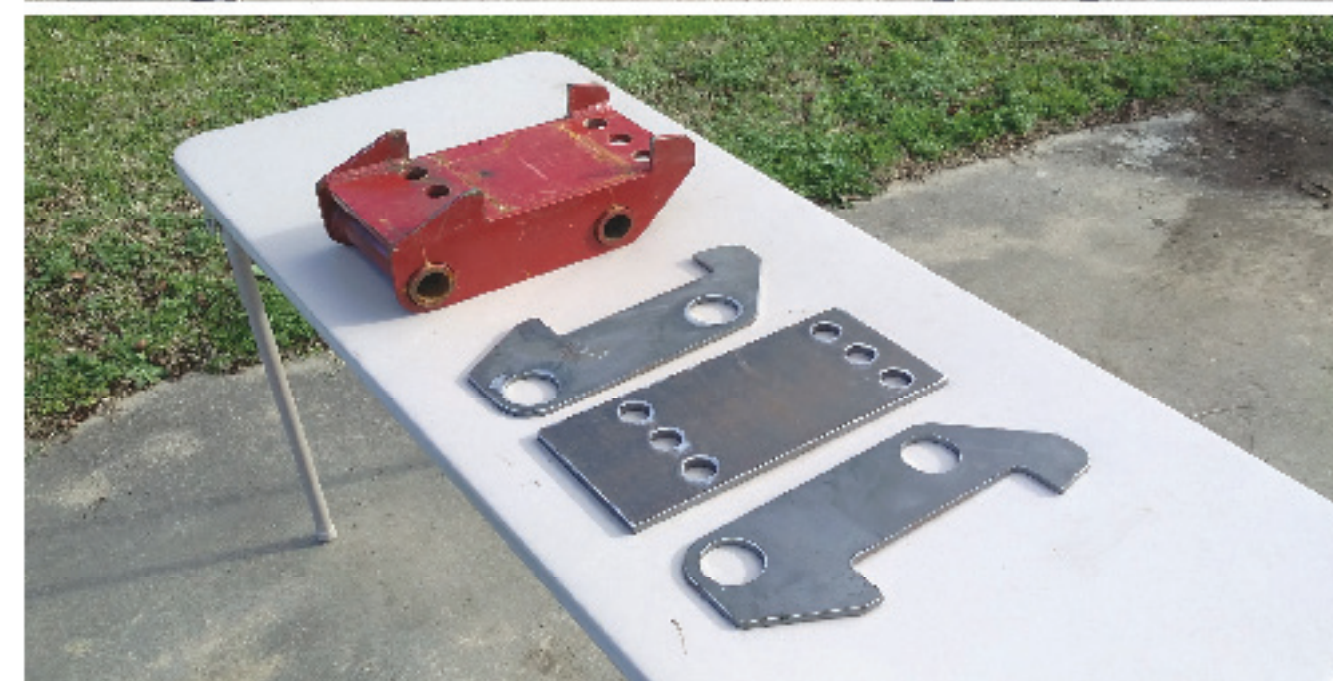


Bottom Linkage

2x2tube	1	2" x 4" x 3/8" Tube 7" Long
BLIP	2	14" x 2.5" x 3/8" Inner Plates
BLOPL	1	14" x 2.5" x 3/8" Left Outer Plate with Down Pressure Tab
BLOPR	1	14" x 2.5" x 3/8" Right Outer Plate with Down Pressure Tab

PATS Cultivator Frame

Part #	# Required Per Row	Description
FPLATE	1	Front Plate
RPLATE	1	Rear Plate
RCPLATE	1	Right Center Plate
LCPLATE	1	Left Center Plate
DOM-TUBE	2	Parallel Linkage Tubes



Part #	# Required	Description
SCPLATE	1	12.5" x 5.5" x 1/2" Plate
SPLATES	2	3/8" Side Plates
DOM-TUBE	2	Parallel Linkage Tubes

Perkins Sales is owned and operated by Tyler Perkins and his wife Cindy.

Tyler and I have been working on conservation tillage projects for over 20 years. Tyler put me in touch with Norwest Manufacturing 2 years ago.

Joel purchased 7 row units in 2014 with money received from scrap metal he contracted me to clean up on halves.

This 6 row cultivator worked so well Fisher Farms and Andrew Tyson purchased cultivators for 2015.

I displayed the Fisher cultivator at Raleigh last Feb. Burch Farms purchased

ROLLING CULTIVATOR & BED CONDITIONER

FieldTrek
"WEED RESISTANCE IS FUTILE"



Cultivators include 16" Hard-faced Adjustable Spider Gangs, Toolbar*, Heavy-duty Parallel Linkage with Adjustable Down Pressure, Shank & Footpiece.

Wide Row w/4-Spider Gangs
8 row 38" Vert. Fold \$26,479
12 row 38" Vert. Fold \$35,685
12 row 38" Stacker \$41,955

Narrow Row w/3-Spider Gangs
12 row 30" Stacker \$39,975
16 row 30" Stacker \$48,155
16 row 30" Vert. Fold \$41,600

Individual Row Gangs
3-spider \$1,909
4-spider \$2,021

*PRICE WILL VARY SLIGHTLY DEPENDING ON TOOLBAR BRANDS AND FEATURES

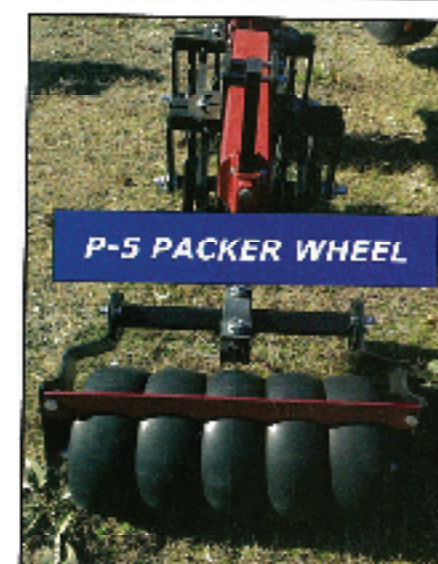
DISC GANG
Cultivator
w/16" Notched
Disc Blades in lieu
of Spiders
SLICES & DICES
WEEDS



12 row 38" Vertical Fold \$38,699*
12 row 38" Stacker \$44,969*
16 row 30" Stacker \$50,725*
4-Disc Individual Row Gang \$2,265
3-Disc Individual Row Gang \$2,068
HD Unit Includes Shank & Footpiece

Use Spiders or Discs!
Cultivation or Bed-Conditioning!

Eliminates Resistant Weeds in Your Field!



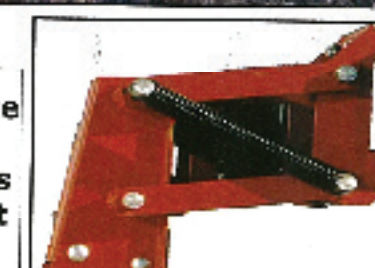
P-5 PACKER WHEEL



Row Bed Conditioner



- Heavy Duty Parallel Linkage Is Designed Around Full Length Greasable Bushings
- Easily Adjustable Row Unit Down Force



an 8 row last spring and another 8 row last fall.

**Note the great job it is doing!
The bottom picture shows the cone rollers Langley Industrial and I built for Fisher Family Farms last winter.**

**We took the disc bedders off and mounted Norwest spring loaded shanks to utilize middle busters to bed.
We also built cone rollers for Burch, J B Rose and Sons, Dawson Brothers and Boseman Farms last year.**

Everyone has been pleased, but we do have problems in extremely wet or dry conditions. I am working on a new



concept to make it lighter and work better in extreme conditions.

I worked all fall with Burch, Boyette and Boseman Farms along with Langley Industrial developing this sweet potato mother root / vine puller.

We still have a few changes to make, but I feel that we will have the only machine that will pull the mother roots and vines while covering up the sweet potatoes in the same pass.

I am also working on trimming the top of the row with individual mowers and terminating the vines in the middles with the pictured coulter gangs days before running the puller.



I am confident that these tools will allow the sweet potato farmer to:

- 1 – Manage the size of his potatoes and help tighten the skins.**
- 2 – Reduce harvesting damage while reducing harvesting loss.**

We can also pull pigweed in organic crops with the puller.

Farmers are facing the worst harvest in decades due to the excessive rain and above average temperatures we have had this fall and winter, along with low crop prices. My plan is to deliver these components as cost effectively as possible to help farmers keep costs down in these difficult times.

Clifton Dixon
2400 Gold Rock Road
Rocky Mount, NC 27804-9022
(252) 916-3828 (Cell)
clifton_dixon@hotmail.com