



# TRX AND T-BIRD



**Digger  
Specialties  
Inc.**

*Transforming the Outdoor Living Experience™*



# DYNAMIC SOLUTIONS INNOVATION

Since 1984, Digger Specialties, Inc. (DSI) has manufactured quality products for the outdoor living industry.

At DSI we are continually working to provide solutions through innovative product development and design to bring the best products to our customers, the marketplace, and the home owner.

Our PolyRail® TRX and T-Bird Vinyl Railing offer a variety of colors, baluster options, and posts to enhance your outdoor living space. This premium line of railing provides a great investment in your home, and is backed by a Lifetime Limited Warranty.



# Table of Contents

Vinyl and Aluminum Colors .....	2
Powder Coating Process .....	3
TRX Vinyl Railing .....	4-7
T-Bird Vinyl Railing .....	8-11
Post Mounts & Kits .....	12
Standard Vinyl Posts .....	13
"A" Series Decorative Vinyl Posts .....	14
Column Clad Vinyl Post Wraps .....	15
"B" Series Aluminum Posts .....	16
ADA Continuous Handrail .....	17

# VINYL AND ALUMINUM COLORS

## Vinyl colors

DSI Vinyl Products are available in multiple colors. Our Mocha color is unique to select models. Please see individual model pages for color availability.



White



Tan

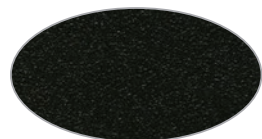


Mocha

## Aluminum Colors

DSI Aluminum Products are available in 12 standard AAMA 2604 colors to compliment your project; from satin color to textured colors. Custom colors and AAMA 2605 colors are available by special order.

### Textured Colors



Black Fine Texture



White Fine Texture



Grey Fine Texture



Bronze Fine Texture



Brown Fine Texture

### Non Textured Colors



Satin Black



Gloss White



Gloss Beige



Ninety Bronze



Chocolate



Sandy Shore



Speckled Walnut

Colors shown are a close approximation of the true color.  
Please request actual samples for accurate colors.



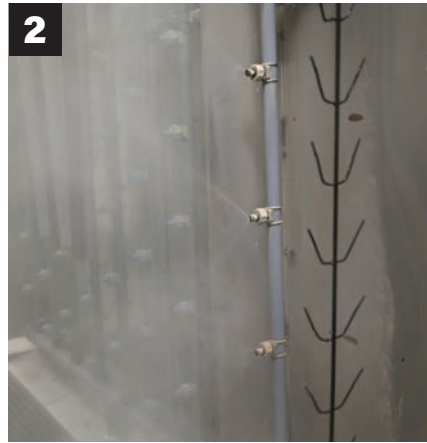
# POWDER COATING PROCESS

## Exclusive DSI Powder Coating Process

DSI's proprietary 10 step powder coating process provides an uncompromising quality created by state-of-the-art technology. Our system is certified by the Powder Coating Institute providing peace of mind in your investment. Our powder coating is verified by the American Architectural Manufacturers Association and is covered by a Lifetime Limited Warranty.



**1**  
**The raw premium-grade aluminum is inspected** to be free of blemishes and is not exposed to the outdoor elements.



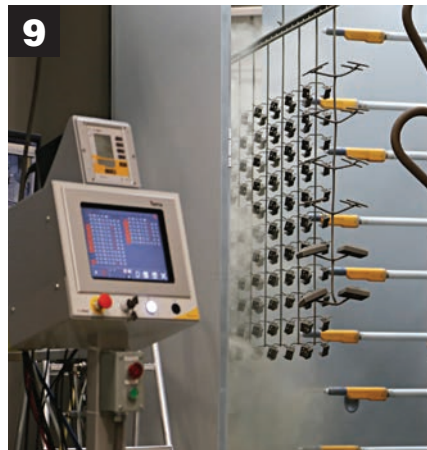
**2**  
**The product enters a heated cleaning stage** to remove extrusion debris and fabrication oils.



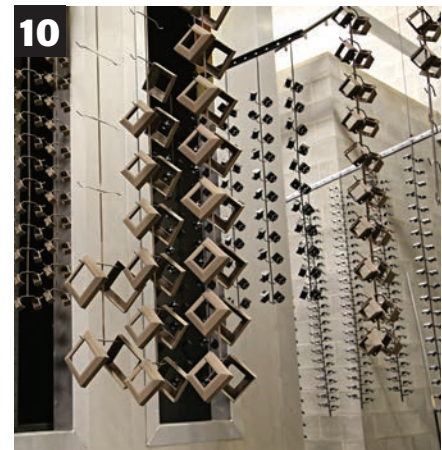
**3-6**  
**Clean:** City water rinse  
**Cleaner:** Recycling reverse osmosis water rinse  
**Cleanest:** Pure reverse osmosis water rinse  
**Sealer:** Dried-in-place aluminum sealer



**7-8**  
**A 200 MPH air blast removes water drops** from the pre-treated aluminum.  
**A convection oven** completes the dry-off process.



**9**  
**Powder is applied** with 18 automated and 2 manual spray guns. Compressed process air is dried to -35°F Dew Point for superior adhesion.



**10**  
**The powder coating is then bonded** and adhered to the aluminum substrate in a 400 degree cure stage.





# TRX VINYL RAILING





# TRX Vinyl Railing



**Standard Baluster**  
1-3/8" x 1-3/8" Square Vinyl  
3-7/8" Baluster Spacing

White

Tan

Mocha



**"A" Series Baluster**  
1-3/8" x 1-3/8" Decorative Vinyl  
3-7/8" Baluster Spacing  
42" Balusters are Aluminum Reinforced

White

Tan



**"B" Series Baluster**  
3/4" Round Aluminum  
3-7/8" Baluster Spacing  
See Page 2 for Baluster Colors

White

Tan

Mocha

For code compliance information visit [diggerspecialties.com](http://diggerspecialties.com) for details on lengths and balusters covered by testing report CCRR-0147.

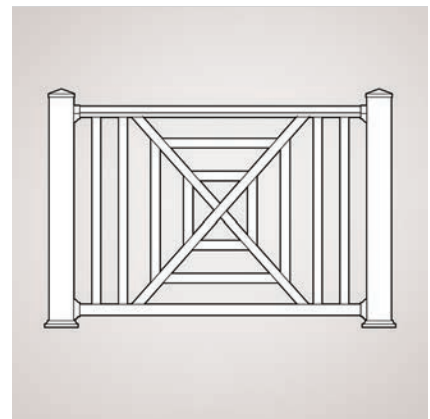
Section Type	Length										Height		Baluster Style		
	4'	5'	6'	7'	8'	9'	10'	12'	14'	16'	36"	42"	Std	A	B
Straight	•	•	•	•	•	•	•				•	•	•	•	•
Stair	•	•	•	•	•	•	•				•	•	•	•	•
Crossover - Straight								•	•	•	•	•	•	•	•
Crossover - Stair											Not Available		Not Available		
Single Chippendale - Straight	•	•	•	•	•	•	•				•	•	•		
Double Chippendale - Straight					•	•	•				•	•	•		
Chippendale - Stair											Not Available		Not Available		
Single Caribbean - Straight	•	•	•	•	•	•	•				•		•		
Double Caribbean - Straight					•	•	•				•		•		
Caribbean - Stair											Not Available		Not Available		



**Crossover**



**Single Chippendale**



**Single Caribbean**

Note: Railing Support included with all 5' - 10' sections. Crossover Sections (10' - 16') include two Railing Supports.

# TRX MOUNTS & ACCESSORIES

## Hidden Screw Rail Mounts

### Standard Wall Mounts:

1-4 pack is included inside each boxed railing section.

A 4 pack contains (2) top mounts, (2) bottom mounts, and screws.



Top Rail Mount



Bottom Rail Mount

### Standard Stair Mounts:

1-4 pack is included inside each boxed stair railing section.

A 4 pack contains (2) top mounts, (2) bottom mounts, and screws.



Top Stair Mount  
(factory pre-cut)



Bottom Stair/  
Angle Mount

### Optional Specialty Mounts:

These mounts are not included with boxed sections.

A 4 pack contains (2) top mounts, (2) bottom mounts, and screws.



Top Stair/  
Angle Mount (uncut)



Bottom Stair/  
Angle Mount



Top 45° Mount  
(factory pre-cut)



Bottom 45° Mount  
(factory pre-cut)

For Stair Racking information  
visit [polyrail.com](http://polyrail.com)

### 8" and 10" Round Smooth Column Adapters



Level Rail      Stair Rail

Not Available in 6"

### 6" and 8" Round Fluted Column Adapters



Level Rail

Stair Rail

Not Available in 10"

### Rail Supports



Standard Vinyl

"B" Series  
Aluminum

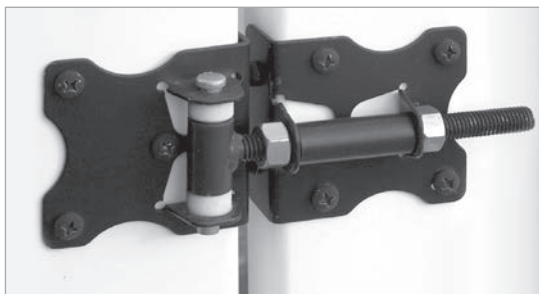


# TRX GATES & HARDWARE

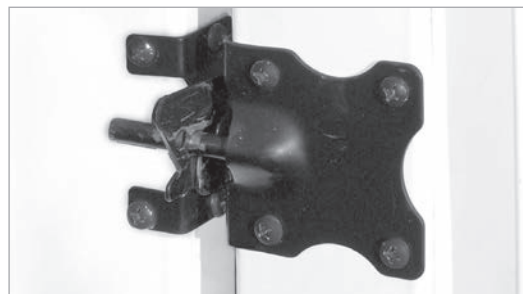


Baluster Style	Gate Size (width x height)			
	36" x 36"	48" x 36"	36" x 42"	48" x 42"
Standard Baluster	•	•	•	•
"A" Series Baluster	•	•	•	•
"B" Series Baluster	•	•	•	•

## Residential Hinge



## Residential Latch



White

Tan

Mocha

Black

Our Mocha color is unique to select models. Please see individual model pages for color availability.



# T-BIRD VINYL RAILING





# T-Bird Vinyl Railing



## Standard Baluster

1-3/8" x 1-3/8" Square Vinyl  
3-1/2" Baluster Spacing

White

Tan

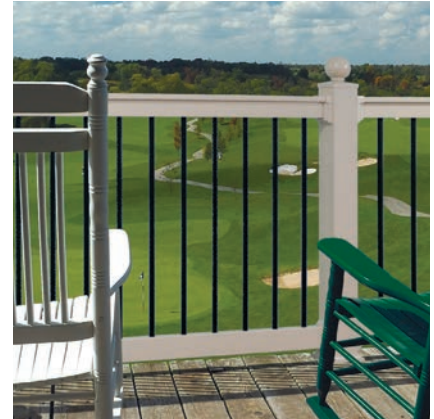


## "A" Series Baluster

1-3/8" x 1-3/8" Decorative Vinyl  
3-1/2" Baluster Spacing  
42" Balusters are Aluminum Reinforced

White

Tan



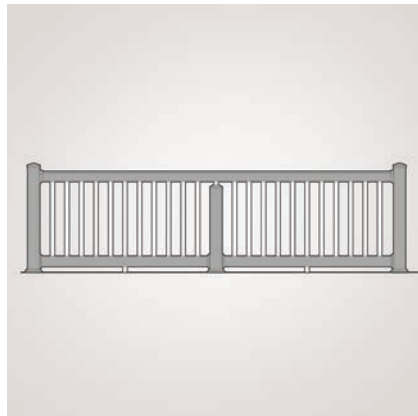
## "B" Series Baluster

3/4" Round Aluminum  
3-7/8" Baluster Spacing  
See Page 2 for Baluster Colors

White

Tan

Section Type	Length										Height		Baluster Style		
	4'	5'	6'	7'	8'	9'	10'	12'	14'	16'	36"	42"	Std	A	B
Straight	•	•	•	•	•	•	•				•	•	•	•	•
Stair	•	•	•	•	•	•	•				•	•	•	•	•
Crossover - Straight								•	•	•	•	•	•	•	•
Crossover - Stair					Not Available						Not Available		Not Available		
Single Chippendale - Straight	•	•	•	•	•	•	•				•	•	•		
Double Chippendale - Straight					•	•	•				•	•	•		
Chippendale - Stair					Not Available						Not Available		Not Available		



Crossover



Double Chippendale

Note: Railing Support included with all 8' - 10' sections. 16' Crossover Sections include two Railing Supports.



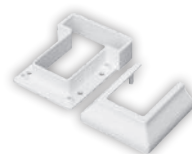
# T-BIRD MOUNTS & ACCESSORIES

## Hidden Screw Rail Mounts

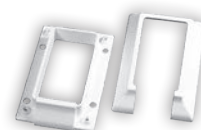
### Standard Wall Mounts:

1-4 pack is included inside each boxed railing section.

A 4 pack contains (2) top mounts, (2) bottom mounts, and screws.



Top Rail Mount

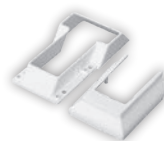


Bottom Rail Mount

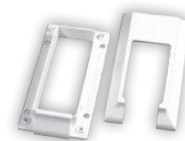
### Standard Stair Mounts:

1-4 pack is included inside each boxed stair railing section.

A 4 pack contains (2) top mounts, (2) bottom mounts, and screws.



Top Stair Mount



Bottom Stair Mount

### Optional Specialty Mounts:

These mounts are not included with boxed sections.

A 4 pack contains (2) top mounts, (2) bottom mounts, and screws.



Top/Bottom  
Angle Mount



Top 45° Mount  
(factory pre-cut)



Bottom 45° Mount  
(factory pre-cut)

For Stair Racking information  
visit [polyrail.com](http://polyrail.com)

### 8" and 10" Round Smooth Column Adapters



Level Rail      Stair Rail

Not Available in 6"

### 6" and 8" Round Fluted Column Adapters



Level Rail

Stair Rail

Not Available in 10"

### Rail Supports



Standard Vinyl

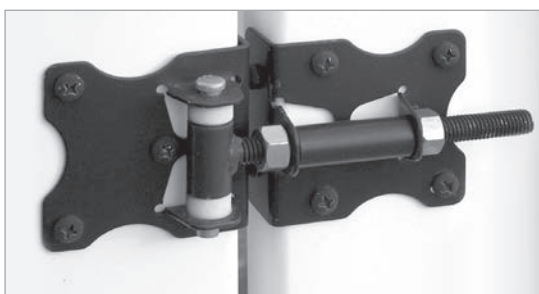
"B" Series  
Aluminum

# T-BIRD GATES & HARDWARE

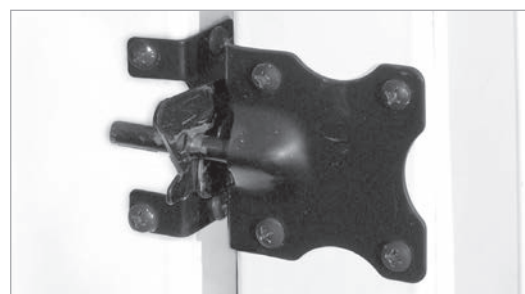


Baluster Style	Gate Size (width x height)			
	36" x 36"	48" x 36"	36" x 42"	48" x 42"
Standard Baluster	•	•	•	•
"A" Series Baluster	•	•	•	•
"B" Series Baluster	•	•	•	•

## Residential Hinge



## Residential Latch



White

Tan

Black

# POST MOUNTS & KITS

## 4" Residential Adjustable Aluminum Post Mounts

Requires 4" (.160" Wall)  
Post Sleeve.

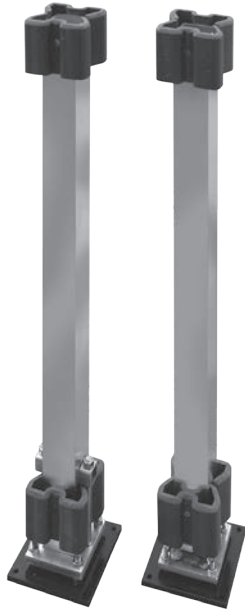


Top View

Powder coated base plates  
resist corrosion and  
ACQ wood treatment.



Angle Adjustment  
Leveling Bolts



Heavy Duty

Standard

## Top and Bottom Post Mounts



5" Top & Bottom  
Hurricane Mount  
Set (Included  
with all 5" Square  
Support Posts)



Optional 4" Top  
and Bottom Post  
Mount Plates



## TRX Boxed Post Kit

### 5 Options Available:

1. Without Aluminum Post Mount
2. With IRC Post Mount
3. With IBC Post Mount
4. With Residential Heavy Duty Post Mount
5. With Residential Standard Post Mount

### Includes:

- 4" x 4" Vinyl Post
- Post Mount (optional)
- Flat or Trim Cap
- Post Flair

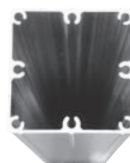
## 4" IBC and IRC Post Mounts

### IBC (Heavy Duty) Post Mounts:

- IBC Approved
- 3.62" Tube
- .060" Wall
- 1/2" x 5 1/2" square plate with 8 fasteners
- Shims and leveling bolts included



Top View



43" IBC  
Post Mount

Available in  
37", 43", 47"  
& 53" lengths

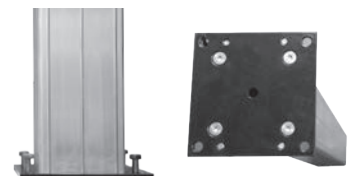


37" IRC  
Post Mount

Available in  
37", 43", 47"  
& 53" lengths

### IRC (Standard) Post Mounts:

- IRC Approved
- 3.62" Tube
- .060" Wall
- 1/4" x 5 1/2" square plate with 4 fasteners
- Shims and leveling bolts included



Requires 4" (.135" Wall) Post Sleeve  
Note: 5" and 6" Post Mounts available.  
Contact Customer Service for information.



# STANDARD VINYL POSTS

## Posts



## Caps



Flat Cap  
4", 5", 6"



Trim Cap  
4", 5", 6"



Gothic Cap  
4", 5"



Ball Cap  
4", 5"

## Magenta Star®

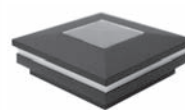
Magenta Star® Ornamental Low Voltage and Solar Lights. Visit [magenastar.com](http://magenastar.com) for more information and to see additional styles and options.



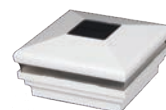
Ornamental Low Voltage 4"



Ornamental Low Voltage 5"



Ornamental Solar 4"



Ornamental Solar 5"

## Flairs



4" Flair (1-piece)  
Use with IBC/IRC Post Mount and Sleeve



4" Flair (2-piece)  
Use with IBC/IRC Post Mount and Sleeve



4" Snap Lock Flair (1-piece)  
Use with Residential Post Mount and Sleeve



5" Flair (1-piece)  
Use with Square Support Posts or Sleeve



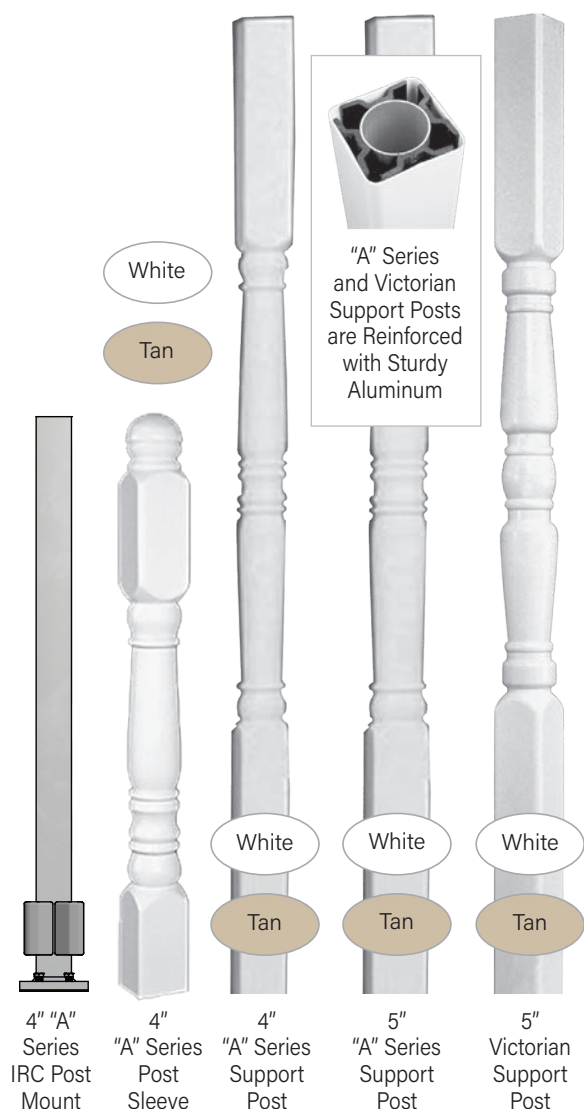
6" Decorative Flair (1-piece)

## Specifications

	4" Post Sleeve	5" Post Sleeve	5" Support Post	6" Post Sleeve
Heights	38", 44", 48", 54" 8', 9', 10'	38", 44", 48", 54" 8', 9', 10'	8', 9', 10'	38", 44", 48", 54" 10'
Load Capacity	Non-Load Bearing w/o Wood Post	Non-Load Bearing w/o Wood Post	8' = 12,000 lb.	Non-Load Bearing w/o Wood Post

# "A" SERIES DECORATIVE VINYL POSTS

## Posts



## Cap



"A" Series Decorative Post Caps are Easily Attached with Vinyl Adhesive  
Cap is Included with Post

## Flairs



## Support Post Mounts



## Specifications

	4" "A" Series Post Sleeve	4" "A" Series Support Post	5" "A" Series Support Post	5" Victorian Support Post
Heights	38", 44", 48", 52"	9'	9', 10'	9'
Load Capacity	Non-Load Bearing w/o Aluminum Post Mount	3,900 lb.	9' = 7,520 lb.	9' = 7,520 lb.

# COLUMN CLAD VINYL POST WRAPS

## Style

The Wood Post Supplies Load Capacity



White  
Tan

Smooth



Ratchets to  
Lock Together



Wraps Around  
the Wood Post –  
No Screws Needed

## Cap



Column Clad Cap  
4", 6"

## Flair



Column Clad Flair (4-piece)  
4", 6"

## Specifications

	4" Smooth Column Clad	6" Smooth Column Clad
Heights	8', 10'	8', 10'
Load Capacity	Non-Load Bearing w/o Wood Post	Non-Load Bearing w/o Wood Post



# "B" SERIES ALUMINUM POSTS

Available in 12 DSI Colors (shown on page 2)

## Posts



4" Post Sleeve  
(.065" wall)

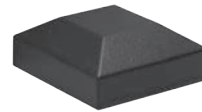
4" Post w/Plate  
(.090" wall)

6" Post w/Plate  
(.090" wall)

4" Support Post  
(.090" wall)

6" Support Post  
(.090" wall)

## Caps

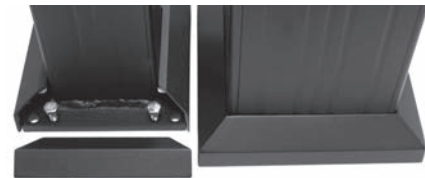


Flat Cap  
4", 6"



Ball Cap  
4"

## Flair



Post Flair (2-piece)  
4", 6"

## Tie Down Bracket



Tie Down Bracket  
with Cover  
(Set of 2)

Installation Instructions  
Require 2 Sets  
per Support Post

## Specifications

	4" "B" Series Post Sleeve	4" "B" Series Post w/Plate	6" "B" Series Post w/Plate	4" "B" Series Support Post	6" "B" Series Support Post
Heights	38", 44", 48", 54"	38", 44", 48", 54"	38", 44", 48", 54"	8', 9', 10'	8', 9', 10'
ASD Capacity* (Allowable Axial Loads)	Non-Load Bearing w/o Wood Post	Non-Load Bearing	Non-Load Bearing	8' = 13,531 lb. 9' = 12,751 lb. 10' = 11,970 lb.	8' = 16,543 lb. 9' = 16,543 lb. 10' = 16,543 lb.

\*Weight values are Actual Calculated Allowable Loads

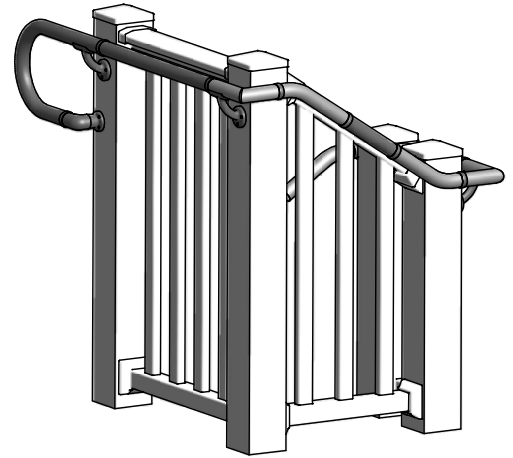
# ADA CONTINUOUS HANDRAIL

ADA Continuous Handrail is designed to assist individuals with accessibility and mobility concerns.

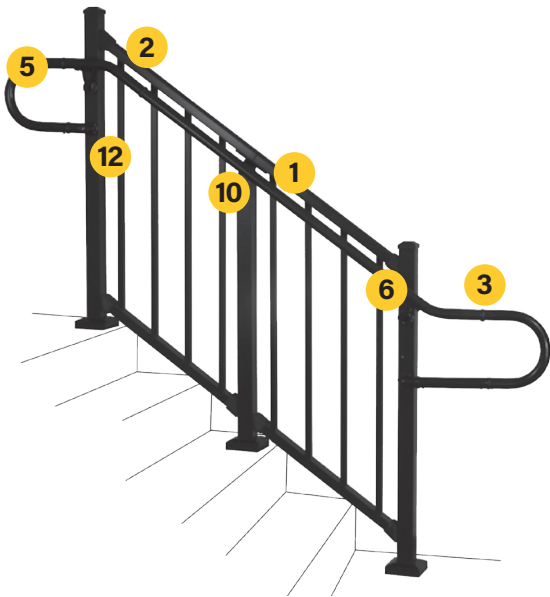
This system offers versatile components and accessories, providing the perfect safety solution for stairways, ramps, and decks.

ADA Continuous Handrail is easy to install on any surface and is compatible with new or existing railing systems.

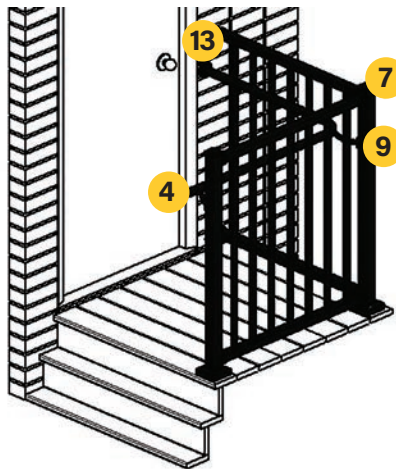
Available in 12 DSI colors (shown on page 2).



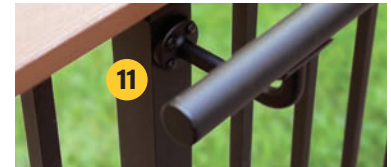
## Stair Application



## Deck Application



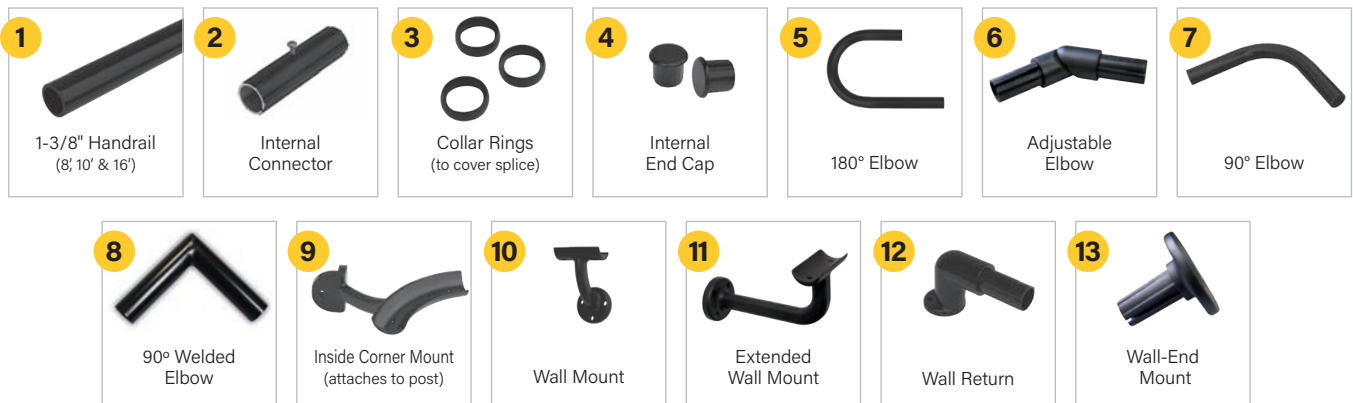
Inside Corner Mount  
& 90° Elbow Detail



Extended Wall Mount Detail



90° Welded Elbow Detail





**Digger  
Specialties  
Inc.**

*Transforming the Outdoor Living Experience™*

## DSI Family of Products



**Magena Star®**  
LIGHTING SYSTEM



**Westbury®**  
ALUMINUM RAILING



**DSI Columns®**  
COMPOSITE AND FIBERGLASS



**DSI Columns®**  
ALUMINUM

**diggerspecialties.com**

**Stay Connected**



We have tried to make this brochure comprehensive and factual. We reserve the right to discontinue at any time, without notice, colors, materials, equipment and availability. Since some information may have been updated since the time of printing, we are not responsible for typographical or pictorial errors. Materials shown may vary slightly from actual colors. ©Digger Specialties 2021/03 99677