

Modern design

Contemporary colours

Get in touch!

You're a phone-call away

Mountain View

Mt Roskill



Exterior colours

Cladding	Doors	Joinery	Louvres	Frames
White Brown Grey	Dark Cedar	Matt Black	Titania	Matt Black

Neilston homes is built on the idea that all New Zealanders should have a chance to connect with a piece of our beautiful country. A place to raise a family and call their own. That's why our homes are built to be modern, affordable, sustainable and to a quality Kiwis expect.

So when you are ready, get in touch and we can take the next step together.



Interior style



Jim Rodgers

021 832 075
jim@neilston.co.nz



Heather Rodgers

021 832 071
heather@neilston.co.nz

All the amazing opportunities Mt Roskill has to offer, and only 7km from the central city. Easy public transport routes and frequent bus services along Dominion Rd.

There is a lot of green space for you to enjoy the outdoors, including the revived Freeland Reserve.

These architecturally designed homes are all 2 storey. 3 bedrooms upstairs and living/dining downstairs opening up to an outdoor area, which creates great indoor outdoor flow.

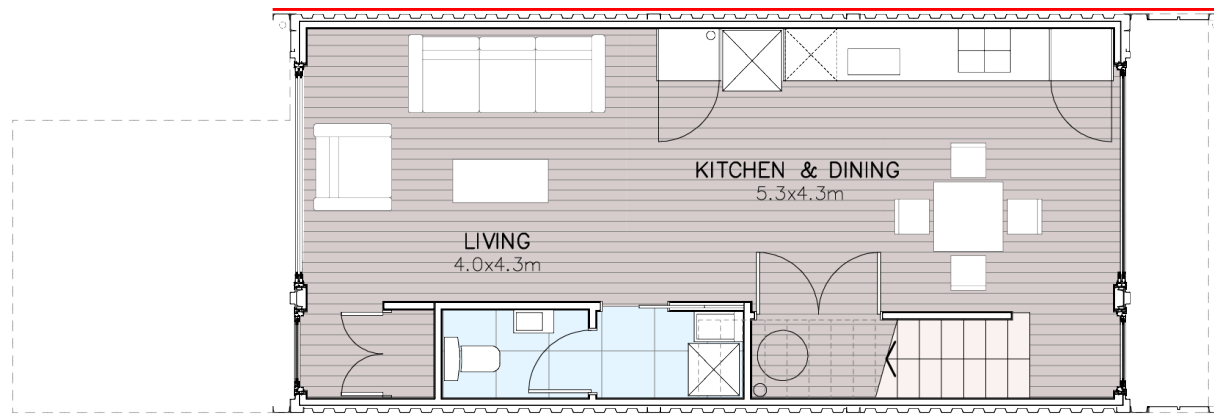


neilstonhomes.co.nz

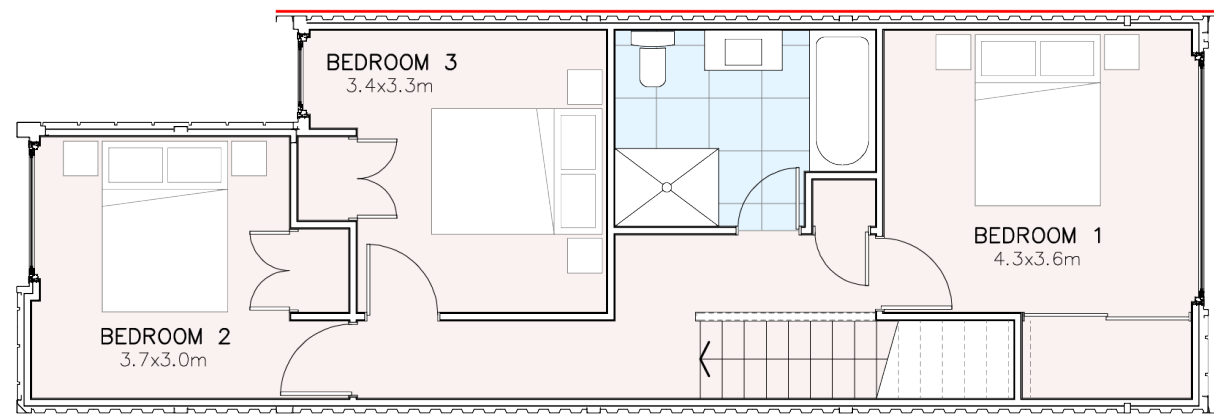


neilstonhomes.co.nz

Available now!



GROUND LEVEL



UPPER LEVEL

Floor plan may vary

Lot 22, 21A Freeland Ave

\$860,000

Fixed price. 10% Deposit. Balance on Completion

- 3 Bedrooms
- 1.5 Bathrooms
- 1 Car
- 99m² Living Area
- 90m² Total Area

Key features

- Architecturally Designed
- Open Plan Living
- 3 great sized bedrooms
- Large windows
- Indoor outdoor flow

Plus

- 10 Year Guarantee
- 12 Month Warranty
- Home Star 6
- Double glazing
- Off street carpark
- Water Tank
- Engineered Stone Bench Top

