

# Modern design

Contemporary colours

# Get in touch!

You're a phone-call away

# The Balfron

Mt Roskill

## Exterior colours

Cladding



Cashmere  
Blackball  
Titania

Doors



Pioneer  
Matt Red

Joinery



Matt  
Black

Louvres



Titania  
Bronze Kinetic

Neilston Homes is built on the idea that all New Zealanders should have a chance to connect with a piece of our beautiful country. A place to raise a family and call their own. That's why our homes are built to be modern, affordable, sustainable and to a quality Kiwis expect.

So when you are ready, get in touch and we can take the next step together.



**Jim Rodgers**

021 832 075  
jim@neilston.co.nz



**Heather Rodgers**

021 832 071  
heather@neilston.co.nz

## Interior style



neilstonhomes.co.nz



All the amazing opportunities Mt Roskill has to offer, and only 7km from the central city. Easy public transport routes and frequent bus services along Dominion Rd.

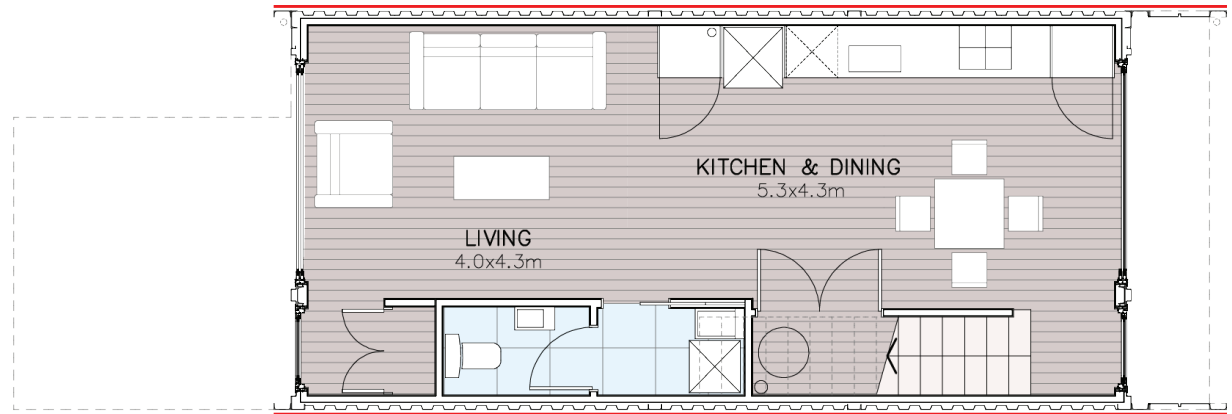
There is a lot of green space for you to enjoy the outdoors, including the revived Freeland Reserve.

These architecturally designed homes are all 2 storey. 3 bedrooms upstairs and living/dining downstairs opening up to an outdoor area, which creates great indoor outdoor flow.

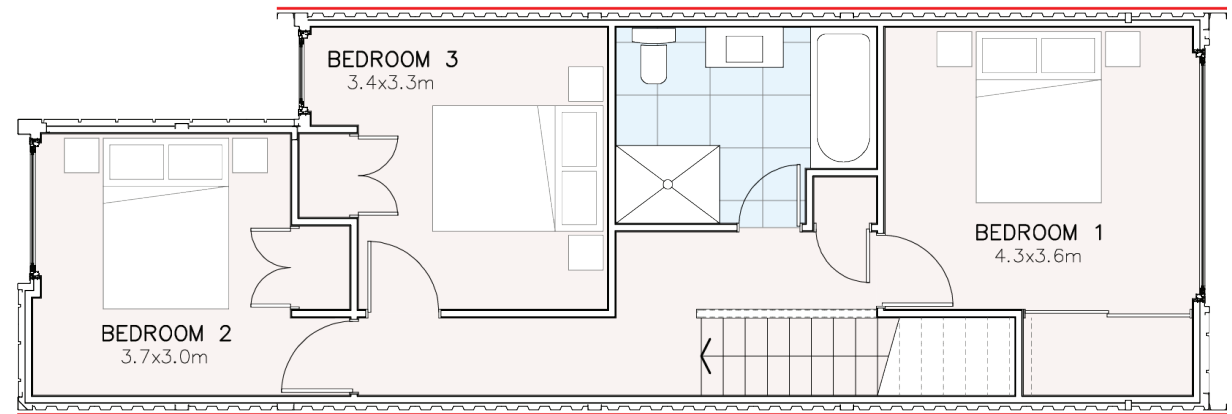


neilstonhomes.co.nz

Available now!



GROUND LEVEL



UPPER LEVEL

 15/12 Balfron Ave

 \$939,000

Fixed price. 10% Deposit. Balance on Completion

 3

 1.5

 1

 99m<sup>2</sup>

 155m<sup>2</sup>

### Key features

- Architecturally Designed
- Open Plan Living
- 3 Great Sized Bedrooms
- Large Windows
- Indoor-outdoor Flow

### Plus

- 12 Month Warranty
- Home Star 6
- Double Glazing
- Off-street Carpark
- Heat Pump
- Water Tank
- Engineered Stone Bench Top

Floor plan may vary

