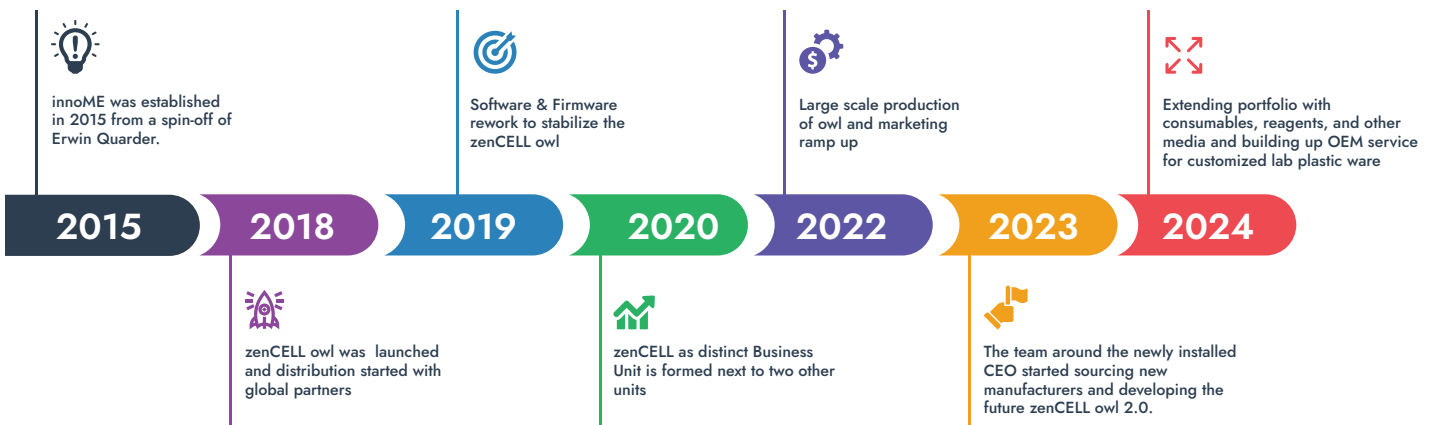


innome

**YOUR ALL-IN-ONE CELL
CULTURE PARTNER**

HISTORY

innoME GmbH was established in 2015 through a collaboration between the automotive supplier for hybrid plastic and sensor parts Erwin Quarder Group (EQ) and the Technical University of Munich. The start-up had the aim to develop and produce innovative products for med and lab tech. **zenCELL** was then formed in 2020 as the cell culture branch and a distinct **business unit of innoME GmbH**.



Formerly consisting of 3 business units, innoME offered several products all catering to different application areas. The idea was to create a product portfolio that holistically monitors all parameters and processes in the lab to provide scientist and researchers with all relevant data and insights. 2 of those business units already spun off.



In 2023, under the newly reconstructed innoME GmbH, the major product is the zenCELL owl. An incubator microscope, to monitor a variety of multi-well plates in cell culture. Equipped with an AI-powered software that gives the scientists more insights on their probes by recognizing cells automatically and thus creating different statistics and analyses. The aim is to expand the product offerings in a direction that extensively serves laboratories, such as consumables and other innovative plastics.

TABLE OF CONTENT

3 - 6

Microscope and more

- P. 4 Incubator Microscope
- P. 5 Software solutions
- P. 6 Movable stage for 96 and 384 wells

7 - 11

Consumables: sterile or non sterile

- P. 8 Biological process (Mulit-Layers, Roller Bottles, Carboy, Erlenmeyer)
- P. 9 Laboratory process (Flasks, Multi-Well Plates, Erlenmeyer, Screw Cap Tube)
- P. 10 Liquid Handling process (Serological Pipette, Tubes, Vials, Filter)
- P. 11 Bottles

12 - 14

Cell Culture Supplements

- P. 13 Albumin
- P. 14 Growth Factors / Cytokine

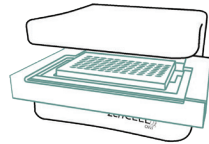
15 - 20

OEM and Customized solutions

- P. 16 OEM solutions and molding
- P. 17 Customized example
- P. 18 OEM sensors and products
- P. 19 Custom antibody production
- P. 20 Storage and shipment solution

MICROSCOPE AND MORE

- P. 4 Incubator Microscope
- P. 5 Software solutions
- P. 6 Movable stage for and 384 wells



Moveable Stage



Automated cell analysis



zenCELL owl



Cell alerts



Visit Us Today



Made in
Germany

CELL CULTURE MONITORING FROM INSIDE THE INCUBATOR

The zenCELL owl is a 24 channel incubator microscope for various applications in the cell culture. From standard cell culture monitoring to migration and wound healing assays to cytotoxicity and compound assays.



Technical details:

Size (WxDxH):	18 cm x 18 cm x 10.5 cm
Weight:	1050 g
Optics	24 x 5MP CMOS 2592 x 1944 Resolution
Light Source	LED
FOV	24 x 1.2 mm x 0.9 mm
Contrasting Methods Optical Filters	Digital Phase Contrast No Filters
Magnification	10X + digital zoom
Power Supply	5 V - USB 3.0 (cable included)
Operational Environment	20°C - 45°C 20% - 95% Humidity
SW Settings	Intervals: 10 minutes – 24 hours Duration: depending on storage space Image capturing: 20s for 24 wells
Disinfectable	Isopropanol, Ethanol

KEY-FACTS:

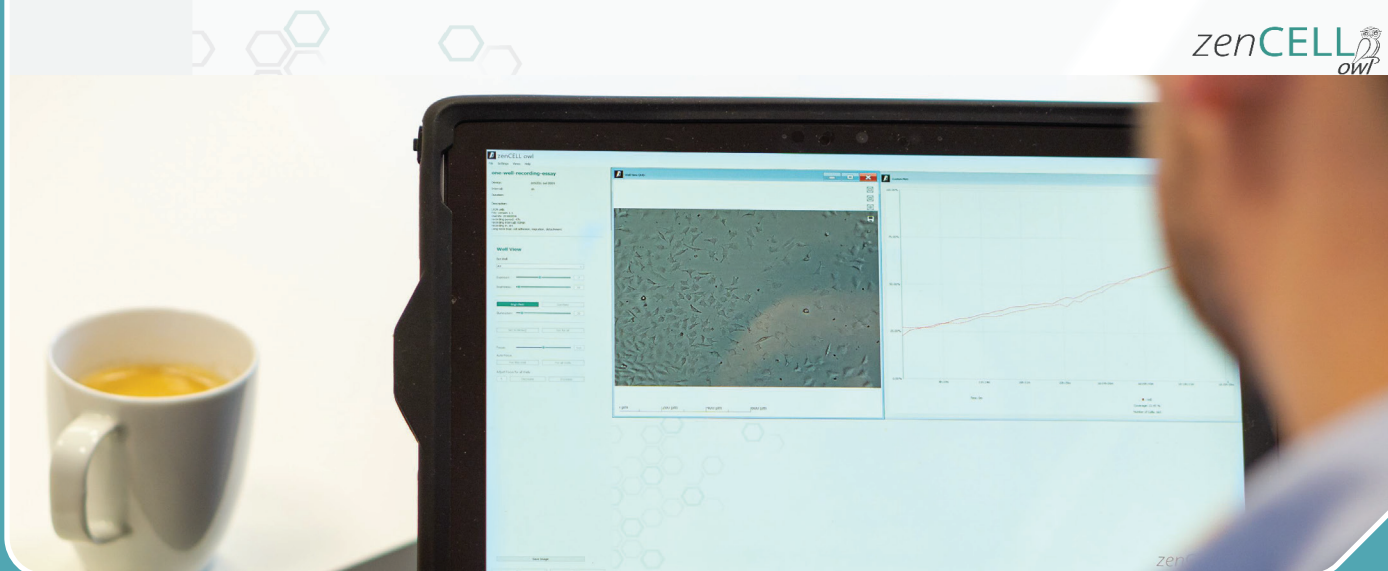
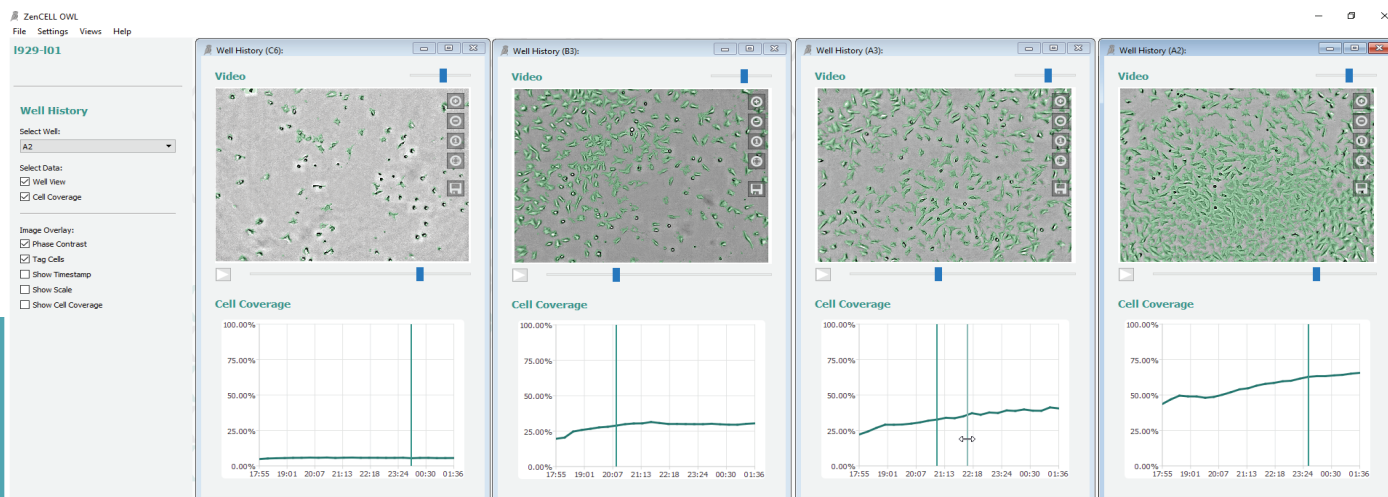
- ✓ Microscope for incubator
- ✓ 24 / 7 h active
- ✓ Small design for each incubator
- ✓ Optimized for up to 24 well plates

SOFTWARE SOLUTIONS

The zenCELL owl comes with an own software solution that facilitates the operation, data generation, and analysis. With its clean interface and clear features, it allows scientists to set an experiment to their requirements.

FEATURES INCLUDE:

- ✔ **Interval:** Set intervals from 10 minutes up to 24 hours (smaller intervals possible with sufficient CPU).
- ✔ **Duration:** Set an end date of your experiment or manually stop it, the duration is only limited by the storage space you have.
- ✔ **Optics:** Easy to adjust illumination, exposure, and fine tune the focus with intuitive sliders.
- ✔ **Algorithms:** The software has an AI that is trained to easily recognize fibroblasts and distinguish between live and dead cells; it also calculates cell confluence in the FOV.
- ✔ **Analyses:** Generate time series analyses with the acquired images and data, also make detailed comparisons between individually chosen groups of wells (e.g. compare doses of compounds and drugs), the software calculates mean values for the algorithms over the chosen/selected groups for more analyses options.
- ✔ **Formats:** Export not only image data generated by the owl, but also plots, timelapse recordings, and the data as png, bmp, avi or csv files, to further analyze your findings.

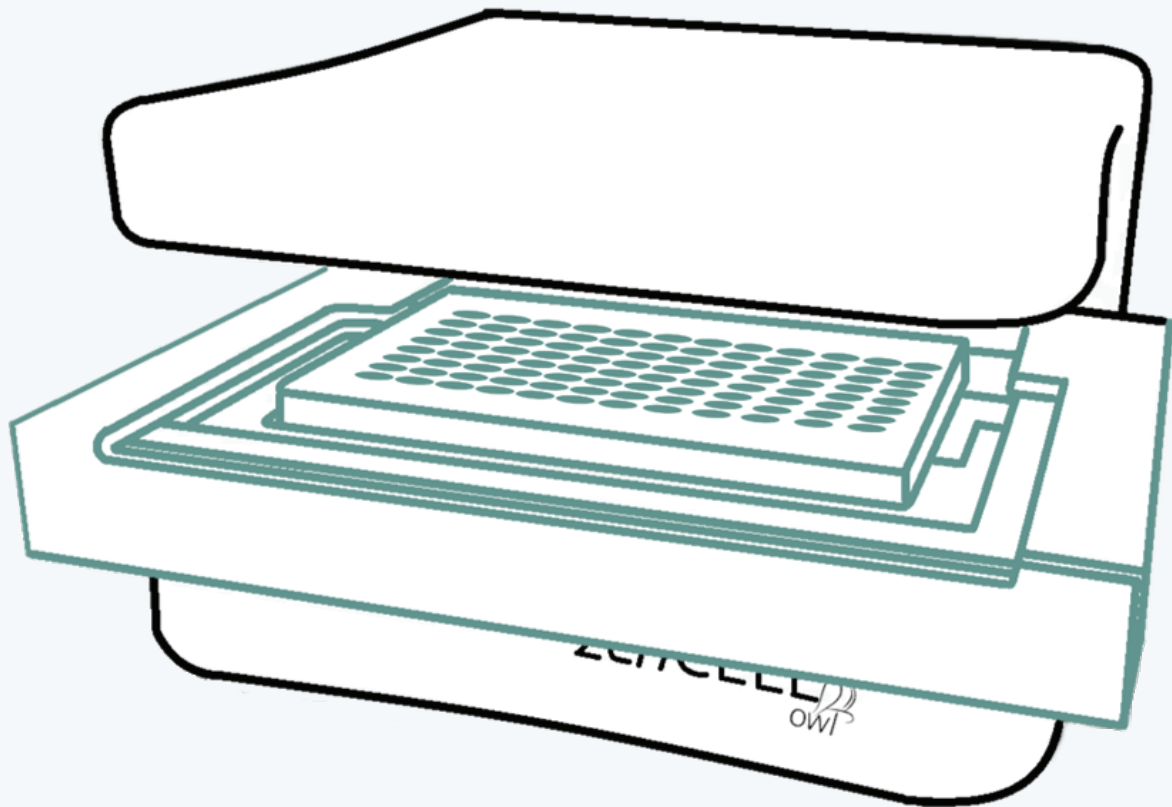


MOVABLE STAGE FOR 96 AND 384 WELLS

Coming soon:

Upgrade your zenCELL owl for high throughput applications and lab automation environments.

The X-Y-Z stage takes the advantages of the owl to the next level and enables the customer to monitor 96- well and 384- Well plates.



FEATURES:

- ✓ From 24 wells up to 384 wells
- ✓ User-friendly interface and installation
- ✓ Incubator resistant, temperature stable
- ✓ Automation for high-throughput workflows
- ✓ Integratable in robots, handlers, grabbers etc.



**Made in
Germany**

CONSUMABLES: STERILE OR NON STERILE

P. 8 Biological process (Multi-Layers, Roller Bottles, Carboy, Erlenmeyer)

P. 10 Liquid Handling process (Serological Pipette, Tubes, Vials, Filter)

P. 9 Laboratory process (Flasks, Multi-Well Plates, Erlenmeyer, Screw Cap Tube)

P. 11 Bottles



FEATURES:

- ✓ ISO-Certified Production Line, Safety Measurements and Quality Control
- ✓ USP VI graded raw material
- ✓ No Pyrogen, No DNase, No RNase
- ✓ German Warehouse, No Import Fees, No Shipping Delays
- ✓ No MOQ, Individual Payment and Shipping Models



**Warehouse in
Germany**

II BIOLOGICAL PROCESS CATEGORY

Multi-layer Cell Factory

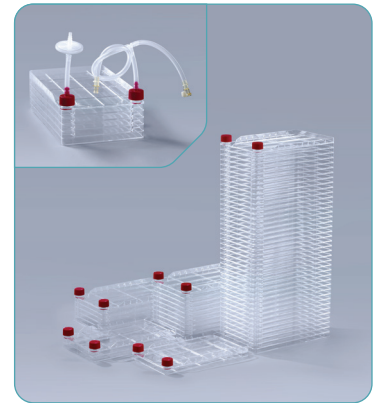
Layers	Culture area (cm ²)	Dimensions in mm (L x W x H)
1	635	335 x 205.5 x 48
2	1270	335 x 205.5 x 65
5	3175	335 x 205.5 x 116
10	6350	335 x 205.5 x 201
40	25400	335 x 205.5 x 711

Features:

- ☑ USP VI medical grade Polystyrene
- ☑ TC or non-TC treated
- ☑ 3-level sealing test kit

Accessories:

- Caps: Seal/Vent/Liquid Transfer/Small mouth
- Big mouth air transfer/ large mouth liquid transfer/ Big mouth tee kit
- Plug/ Small Mouth air transfer /small mouth liquid transfer/small mouth tee



Roller Bottle

Size	Treatment	Culture Area (mL)
2L	TC	1700
2L	TC	850
5L	TC	1750
2L	Non-TC	25%
2L	Non-TC	25%

Features:

- ☑ USP VI medical grade PS
- ☑ Sterile, endotoxin-free, no heat source, no cytotoxicity
- ☑ Vacuum plasma surface treatment



Carboy

Volume	Cap type	Height/diameter in mm	Inner diameter of external pipe in mm
10L	Seal cap	534.23/224	-
10L	Big mouth three ports	534.23/224	13.5
10L	Small moth three ports	534.23/224	7.4

Features:

- ☑ Material: PC
- ☑ Molded Scale/Slim mouth
- ☑ Endurance: -80-125°C
- ☑ Autoclavable



High Efficiency Erlenmeyer Flask

Size	Cap	Diameter in mm (Neck/Bottom)	Working Volume
10L	Vent	70/163	1.12L-1.96L
5L	Vent	90/230.26	2L-3.5L
3L	Seal	70/163	1-2L
5L	Seal	90/230.26	2-3.5L

Features:

- ☑ Material: USP VI or Bisphenol A-free PC
- ☑ Membrane: 0.2 µm breathable barrier sterile, No Endotoxin, DNase-free, RNase-free

Accessories:

- Caps: Transfer Cap (Silicone or hot melt tube, needle or needleless or no sampling/Bi-directional liquid transfer/ two-way transfer (silicone or hot melt tube)/Inverted transfer cap(common /silicone /hot melt tube)



II LABORATORY CELL CULTURE

Cell Culture Flask

Size in cm ²	Culture area (cm ²)	Cap	Treatment	Pack Size
25	25	Seal or Vent	TC-treated	10
75	75	Seal or Vent	TC-treated	5
175	175	Seal or Vent	TC-treated	5
225	225	Seal or Vent	TC-treated	5
25	-	Seal or Vent	Non-TC treated	10
75	-	Seal or Vent	Non-TC treated	5
175	-	Seal or Vent	Non-TC treated	5
225	-	Seal or Vent	Non-TC treated	5

Features:

- ☑ USP VI medical grade PS
- ☑ Angled neck for easy access, sterile, no endotoxin, no heat source, no cytotoxicity

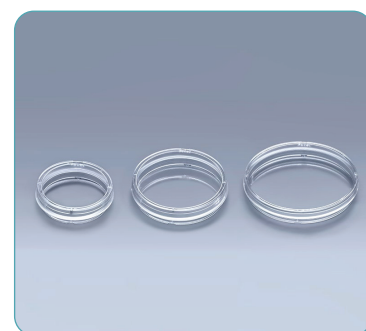


Cell Culture Dish

Size (Ø in mm)	Min package	Sale package	Pcs/case
35	10pcs/pack	50packs/case	500
60	10pcs/pack	50packs/case	500
100	10pcs/pack	30packs/case	300
150	5pcs/pack	20packs/case	100

Features:

- ☑ USP VI medical grade PS
- ☑ Sterile by Gamma irradiation, SAL 10⁻⁶
- ☑ No pyrogen, endotoxin free, no cytotoxicity
- ☑ 35 mm also available as glass bottom



Conical Erlenmeyer Flask

Size in ml	Cap	Diameter in mm (Neck/Bottom)	Working Volume in ml	Material
125	Seal or Vent	29.4/66	30	PC or PETG
250	Seal or Vent	39/83	60	PC or PETG
500	Seal or Vent	39/101	125	PC or PETG
1000	Seal or Vent	39/127	500	PC or PETG

Features:

- ☑ USP VI medical grade PS
- ☑ Sterile by Gamma irradiation, SAL 10⁻⁶
- ☑ No pyrogen, endotoxin free, no cytotoxicity
- ☑ 35 mm also available as glass bottom



Multi-well Plates

Well	Well surface area (cm ²)	Recommended operating volume (ml/well)
6	9.5	2.2-4.48
12	3.8	1.2-1.88
24	1.9	0.55-0.88
48	0.95	0.19-0.48
96	0.32	0.1-0.2



Features:

- ☑ USP VI medical grade PS
- ☑ Sterile, no endotoxin, no heat source, no cytotoxicity;
- ☑ Packing: 100pcs, Blister box or seal bag
- ☑ Also available as Ultra-Low attachment plate

Shaking Tube

Size (ml)	Min package	Sale package	Packaging
50	25pcs/pack	500packs/case	bga



II LIQUID HANDLING PROCESS

Serological Pipettes

Size in ml	Package	Carton
1	50packs/bag	1000pcs/carton
2	50packs/bag	1000pcs/carton
5	50packs/bag	500pcs/carton
10	50packs/bag	500pcs/carton
25	25packs/bag	250pcs/carton
50	25packs/bag	200pcs/carton
100	25packs/bag	120pcs/carton



Features:

- ☑ USP VI medical grade PS
- ☑ Sterilization by irradiation, SAL 10⁻⁶
- ☑ Transparent body, black scaling, colored visuals for easy identification
- ☑ No pyrogen, no endotoxin, no cytotoxicity

Centrifuge Tubes

Volume in ml	Packaging	Packing size
10	Bag or Rack	25pcs/bag ; 500pcs/case
15	Bag or Rack	25pcs/bag ; 500pcs/case
50	Bag or Rack	25pcs/bag ; 500pcs/case



Features:

- ☑ USP VI medical grade Polypropylene (PP)
- ☑ Sterile, no endotoxin, no cytotoxicity
- ☑ Temp. Endurance: -80-120°C; Max force: 18000xg
- ☑ Sterilization by irradiation, SAL 10⁻⁶

Cryogenic Vials

Size (ml)	Category	Category	Packaging
2	10pcs/pack	Self-supporting, internal screw cap	50pcs/bag 1000pcs/case
4	10pcs/pack	Self-supporting, internal screw cap	50pcs/bag 1000pcs/case
2	10pcs/pack	Free-standing, external screw cap	50pcs/bag 1000pcs/case
5	5pcs/pack	Free-standing, external screw cap	50pcs/bag 1000pcs/case



Features:

- ☑ Different coloured caps
- ☑ Working temp.: -196-121°C
- ☑ No DNase-free, RNase-free, no pyrogen, no endotoxin
- ☑ Also available as SBS Cryovials (three-in-one) in 0.5ml/1ml/2ml with external screw cap

Single Use Vacuum Filter Cup

Volume in ml	Material	Membrane diameter (µm)	Packaging
250	Nylon PES	0.22 or 0.45 0.1 or 0.22 or 0.45	1pcs/pack & 12pcs/carton
500	Nylon PES	0.22 or 0.45 0.1 or 0.22 or 0.45	1pcs/pack & 12pcs/carton
1000	Nylon PES	0.22 or 0.45 0.1 or 0.22 or 0.45	1pcs/pack & 12pcs/carton



Features:

- ☑ Disposable, γ-ray pre-sterilization
- ☑ Complies with USP87, USP88
- ☑ No pyrogen, no nuclease, no surfactant, low extractant
- ☑ Ultra-low protein adsorption <1.5% (PES)

II BOTTLES

Square Media Bottles

Volume in ml	Material	Dimensions (Neck Ø, Height, Height with cap) in mm
5	PETG	16.6, 43.7, 45.5
10	PETG	16.6, 54, 55.4
30	PETG	18.8, 60.3, 63
60	PETG	21.5, 80.4, 82.2
125	PETG/PET	35.4, 104, 108
250	PETG/PET	35.4, 140, 144
500	PETG/PET	35.4, 172.5, 176.5
1000	PETG/PET	35.4, 213, 217



Features:

- ☑ Impact, chemical & temperature (-70°C) resistance
- ☑ High transparency, Cobalt-60 Sterilization, no pyrogen, DNase-free, RNase-free
- ☑ No leakage

Accessories:

- Caps with two or three ports, Luer connector silicone tubes
- Various tube lengths and diameter

Reagent Bottles



Volume in ml	Dimensions (in mm)	Weight in g
3	38, 12.5	1.7
8	45.7, 19.5	4.4
10	48.2, 24	6
15	48.5, 27.5	6.6
30	59.3, 34.4	8
30	58.3, 34	10.3
60	82, 38.4	11.3
60	80.9, 41.3	18.9
120	95.6, 50.8	24.2
250	128.3, 61.2	27

Features:

- ☑ High gloss, smooth anti-adhesive inner and outer walls
- ☑ Anti-leakage design
- ☑ Material: PE & PP

CELL CULTURE SUPPLEMENTS

P. 13 Albumin

P. 14 Growth Factors / Cytokine



We are proud to offer BSA, HSA, protein-based products, and other fluids from experienced and high-quality manufacturers with utmost purity and quality for maximum responsiveness and flexibility.

Our supplements and growth factors can also be individualized to your requirements.

ALBUMINS

Sizes:

- ✓ 50 g
- ✓ 100 g
- ✓ 500 g
- ✓ 1000 g

Origins:

US, New Zealand and
Australia

Product Benefits:

- High purity, low interference, low background
- No detectable IgG, endotoxin, enzyme or protease activity
- Ensures assay integrity, component stability, and cell culture suitability
- Superior solubility/filterability for ease-of-use

Process Benefits:

- Origin traceability to facilitate regulatory approval
- Closed-loop manufacturing
- Eliminates the possibility of contamination and maximizes reproducibility, maximum responsiveness, and flexibility

Qualifications:

- Manufactured from USDA-inspected bovine plasma
- Manufactured according to FDA cGMPs
- Validated for Prion (TSE) Clearance
- TSE Certificate of Suitability
- USDA/APHIS Registered for Shipment to the EU

Applications:

- Protease-sensitive immunoassays such as RIA, EIA, Fluorescent and Chemiluminescent
- Protein, conjugate, or enzyme stabilizer
- Hybridization
- Selected cell culture applications
- Protein standard or blocker in:
 - Immunoassays
 - Flow cytometry
 - Serology

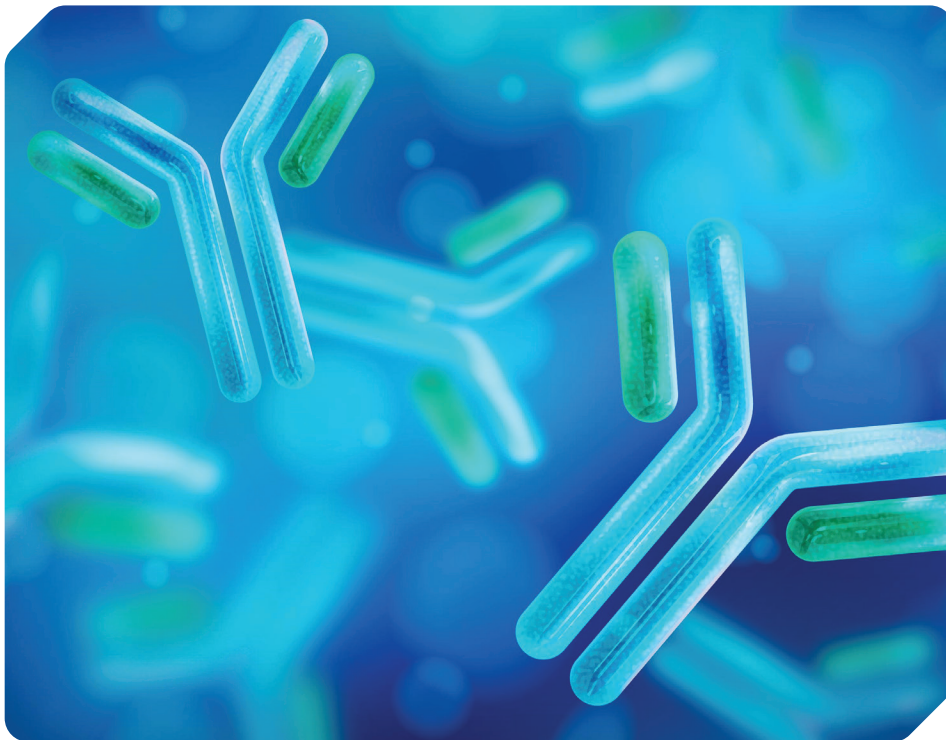


**Warehouse in
Germany**

GROWTH FACTORS/CYTOKINE

Our range of high-quality research use only (RUO) growth factors and cytokines are produced using recombinant DNA technology and do not contain any animal-derived components or contaminants. Stringent purity and bioactivity testing data is available for all proteins.

Examples for Growth Factors are EGF, FGF, NGF, PDGF, VEGF, IGF, GMCSF, GCSF, TGF, Erythropoietin, TPO, BMP, HGF, GDF, Neurotrophins, MSF, SGF, GDF and more.



Examples for Cytokines are Interleukins, Lymphokines, Monokines, Interferons (IFN), colony stimulating factors (CSF), Chemokines, and a variety of other proteins.

Type-1 cytokines are cytokines produced by Th1 T-helper cells while Type-2 cytokines are those produced by Th2 T-helper cells. Type-1 cytokines include IL-2 (IL2), IFN-gamma (IFN-G), IL-12 (IL12) & TNF-beta (TNF-b), while Type 2 cytokines include IL-4 (IL4), IL-5 (IL5), IL-6 (IL6), IL-10(IL10), and IL-13 (IL13).



**Made in
Germany**



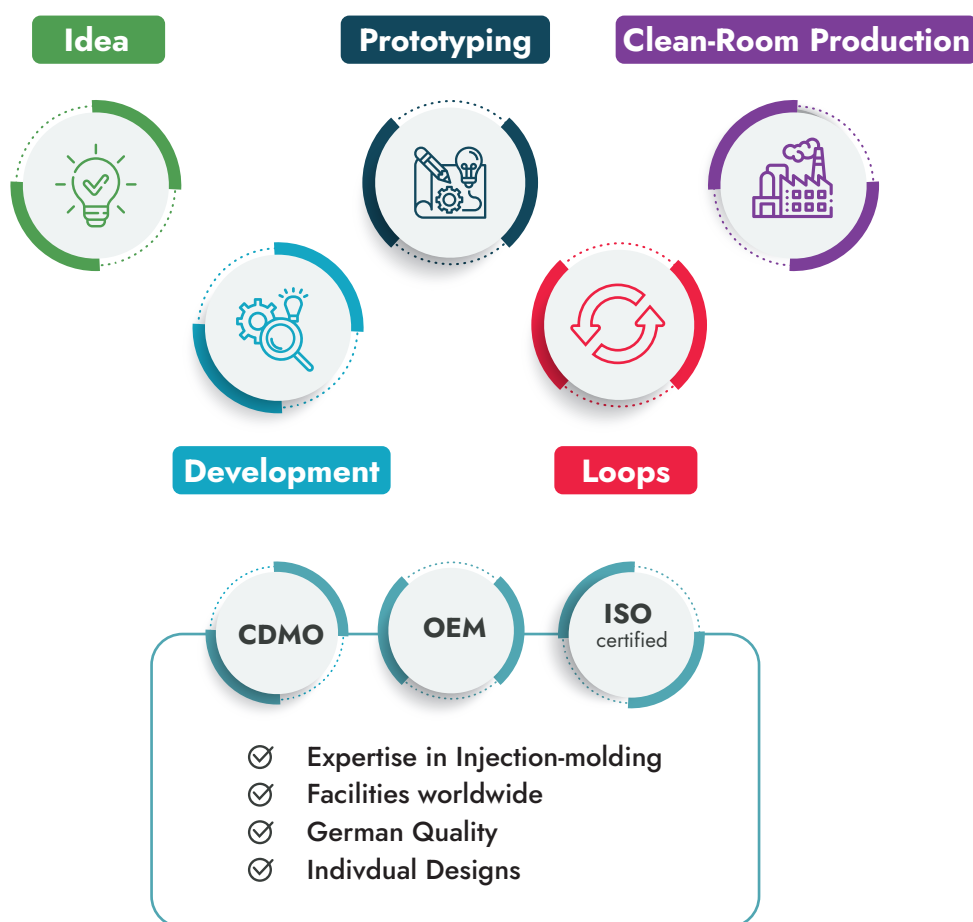
**Warehouse in
Germany**

OEM AND CUSTOMIZED SOLUTIONS

P. 16 OEM production molding
P. 17 OEM production products
P. 18 OEM sensors / products

P. 19 Antibody production
P. 20 Storage and drop shipments

innoME is your All in One Cell Culture Partner, not only for off-the-shelf standard goods, but also for customized plastic ware.



Our Product Portfolio includes Plastics, Sensors, and Chips

MORE HIGHLIGHTS:

- ✓ Bubble-free plastic injection molding
- ✓ Plastic injection including sensors/electronics
- ✓ Cooling systems
- ✓ Sensor sheathing with plastic
- ✓ OEM plastics for life science



We as innoME are proudly rooted in a globally established supplier for the automotive industry. The portfolio includes plastic hybrid sensor components for all renowned automobile manufacturers. innoME extends its commitment to cutting-edge solutions by combining the precision and high-quality standards of our parent company with a vision tailored for the dynamic field of biotechnology.



LONG CONTRACT EXPERT IN:

innome GmbH, a subsidiary of Erwin Quarder Systemtechnik GmbH, can draw on an extensive history and technological know-how that transfers the speciality of EQS to the life sciences market.

- ✓ Bubble-free injection molding
- ✓ Sensor encapsulation
- ✓ From development to mass production
- ✓ Toolmaking for special customer requirements
- ✓ Customized productions



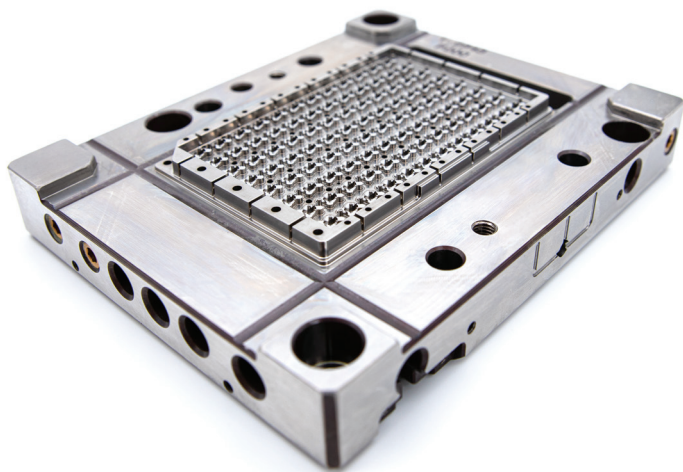
OEM AND CUSTOMIZED SOLUTIONS

Our company specializes in customized solutions in the OEM sector for plastic products, ranging from small series to large orders. At innoME GmbH, we design and manufacture products for cell cultures that meet the high demands of modern life sciences and specific requirements such as cell cultivation and observation.

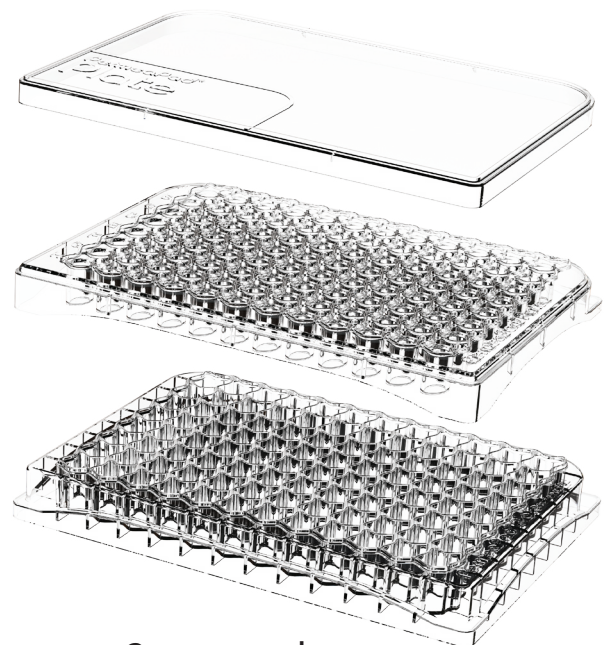
We see significant potential for the advancement of cell culture techniques through the adaptation and enhancement of the biological interface. The targeted modification of biotechnological structures on the surfaces of cell culture vessels is crucial for the functionality and efficiency of our products.

Our range of services includes a variety of offerings, from consulting and laboratory investigations to full product development and manufacturing.

Example



Customer molding



Customer product



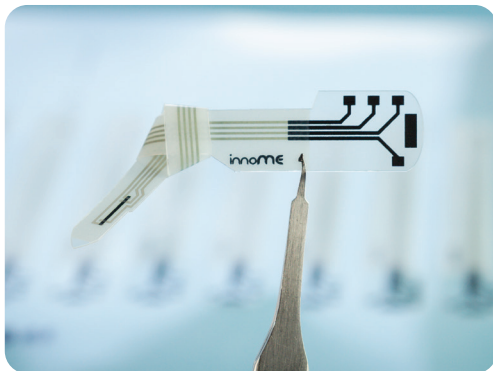
OEM SENSORS & PRODUCTS

Another major point in our field is the unique combination and coating of sensors with plastic. It is increasingly important to establish more sensors in the medical field to generate more important data to further advance research and sustainability.

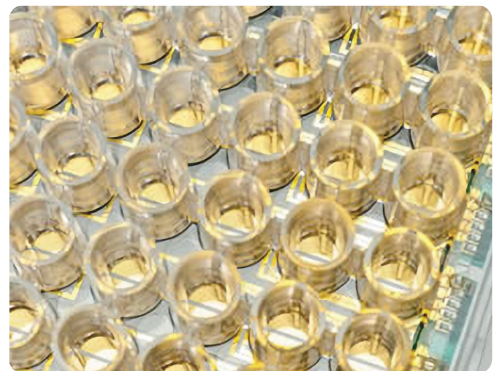
Therefore, we have also historically focused on transferring the know-how of the EQS company to the medical sector and supporting manufacturers in protecting their sensitive sensors in the best possible way.

In addition to our own tool production, we can also create initial prototypes from 3D printing, which come very close to the end product.

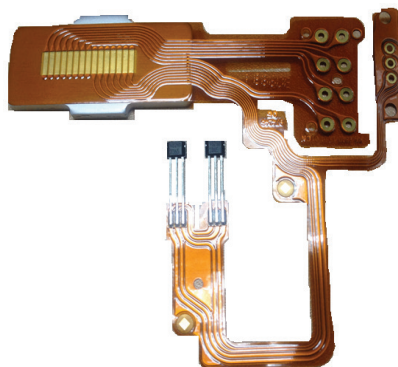
Impedance plate



with print



with gold



Temperature sensor



Made in
Germany

ANTIBODY PRODUCTION

Specification:

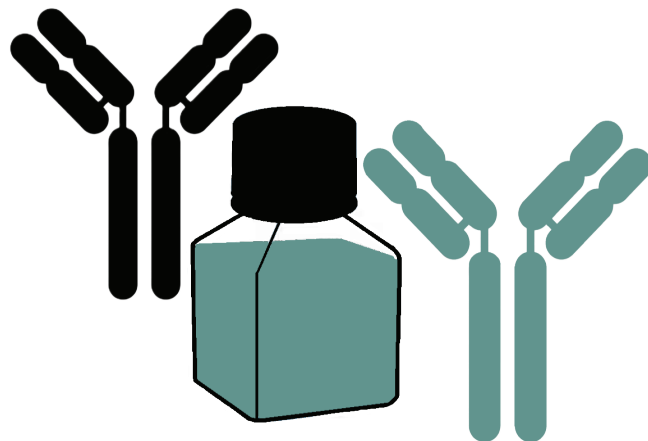
- ✔ Monoclonale antibodies
- ✔ Hybridoma cell lines
- ✔ Cell line development
- ✔ Bulk production with storage options
small shipments available

We are proud to offer antibody production manufactured to your requirements. Our renowned production partners established for over two decades and thus are total experts and assure non less than highest quality.

We work according to your specifications so you can focus on the progress of your project!

Our partners have meticulously processed IgGs and IgMs tailored for research, diagnostics, and preclinical applications. With their experienced team they are dedicated to challenging clones and antibodies, ensuring precision in every aspect. Tailoring the processes to meet your specific requirements is our aspiration.

BENEFITS OF OUTSOURCING ANTIBODY PRODUCTION:



Made in
Germany

STORAGE AND DROP SHIPMENTS

Our state-of-the-art storage facilities are equipped to handle a wide range of products, ensuring that your inventory is safe and secure at all times. With our efficient inventory management system, you can easily track and monitor your stock levels, giving you peace of mind knowing that your products are in good hands.

In addition to storage, we also offer reliable drop shipment services to streamline your supply chain process. Whether you need products shipped directly to your customers or to other locations, our dedicated team will ensure timely delivery and seamless logistics coordination.



KEY FACTS

- ✓ Controlled Store from -20 up to RT
- ✓ Just in time delivery
- ✓ Batch reservation



Warehouse in
Germany



CONTACT US

Please contact us for any enquiries or questions.
We provide solutions!



Tel-Nr.:
+49 89 21 53 77 00

Mailadresse: info@innome.de **Webseite:** www.innome.de

Address: innoME GmbH
In der Tütenbeke 36, 32339 Espelkamp, Germany

